

How to connect LAN from Spectrum Analyzer?

Advantest

1 . Install U3800 LAN GetTrace sample software into PC. (example)

Installer is in PackageForU3800 holder.

If source files are in the Source (STD) folder, you can refer from Visual Basic.

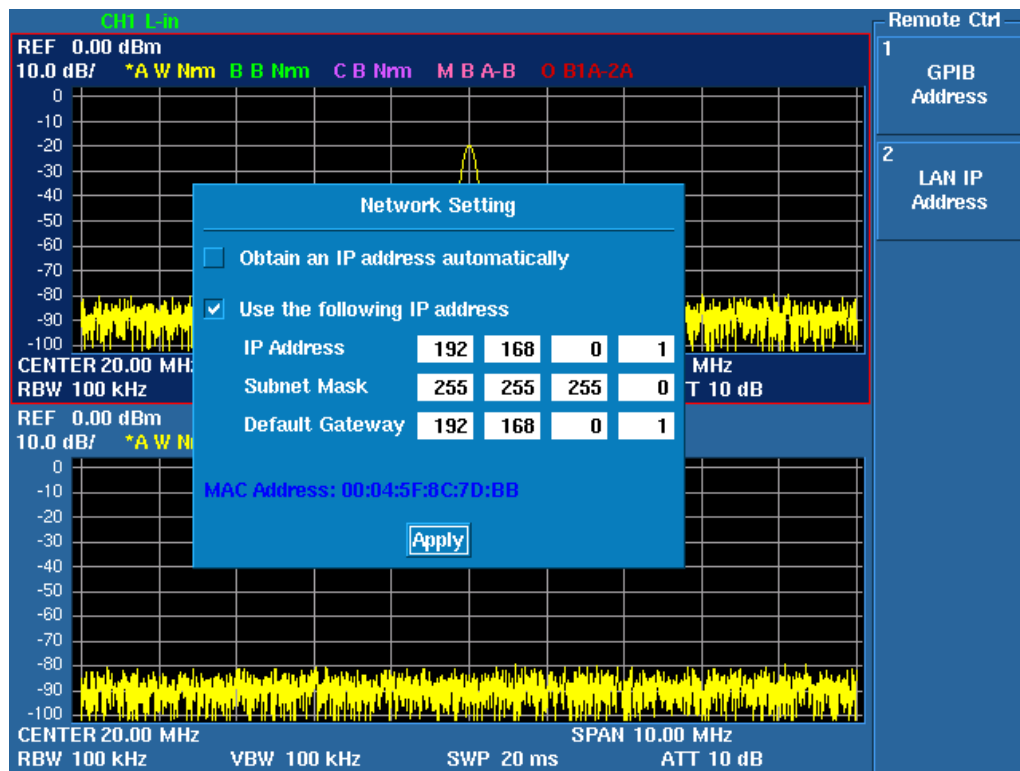
2 . When SPA and PC is direct connection, IP address is set to SPA and PC.

When the connection is way of LAN(WAN), please see chapter 6.

1) SYSTEM – Config. – Remote Control – LAN IP Address

2) Check the Use the following IP address, and set IP address, and set Apply.

3) Set IP Address: Using Knob, Up-down, Ten-key, Hz-key



3 . Set PC IP address.

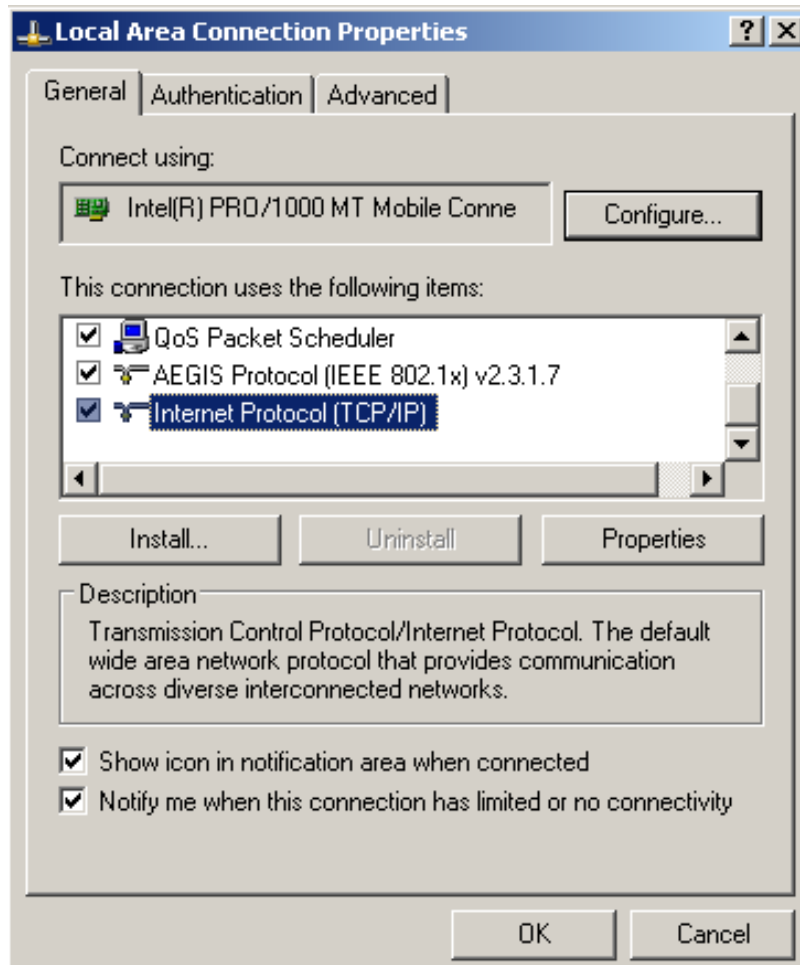
Just only for direct connection. No necessary for LAN network connection.

For WIN2000

My network – Right click - Properties –

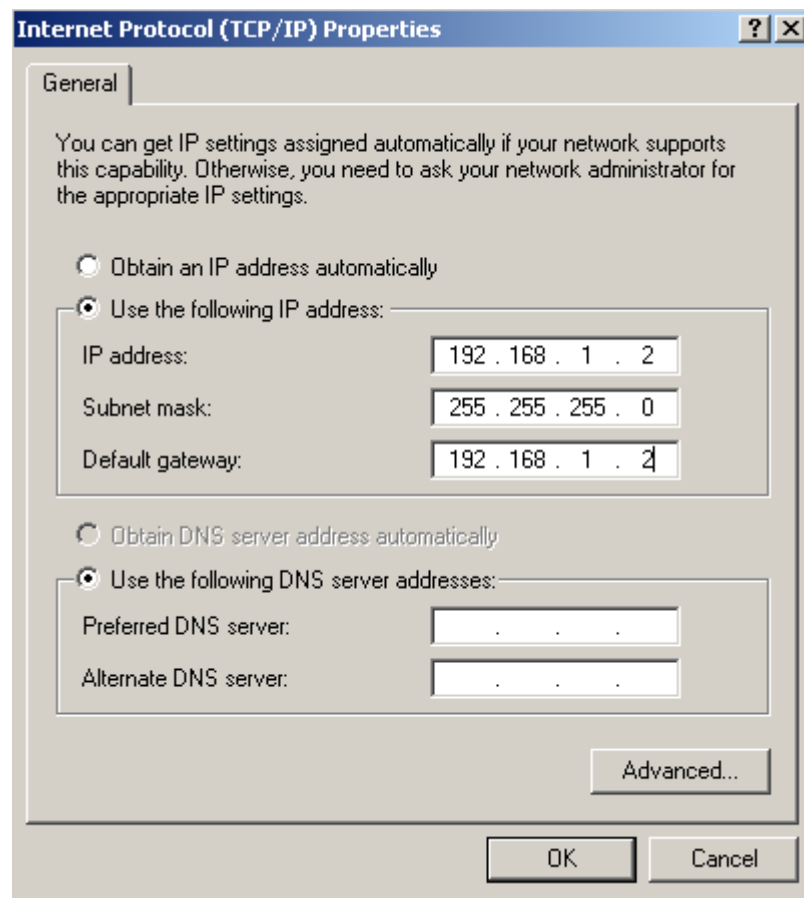
Local Area Connection - Right click - Properties –

Internet Protocol (TCP/IP) – Properties -



Set IP Address

This IP address has to be set difference number from U3800



4 . Connect LAN cable.

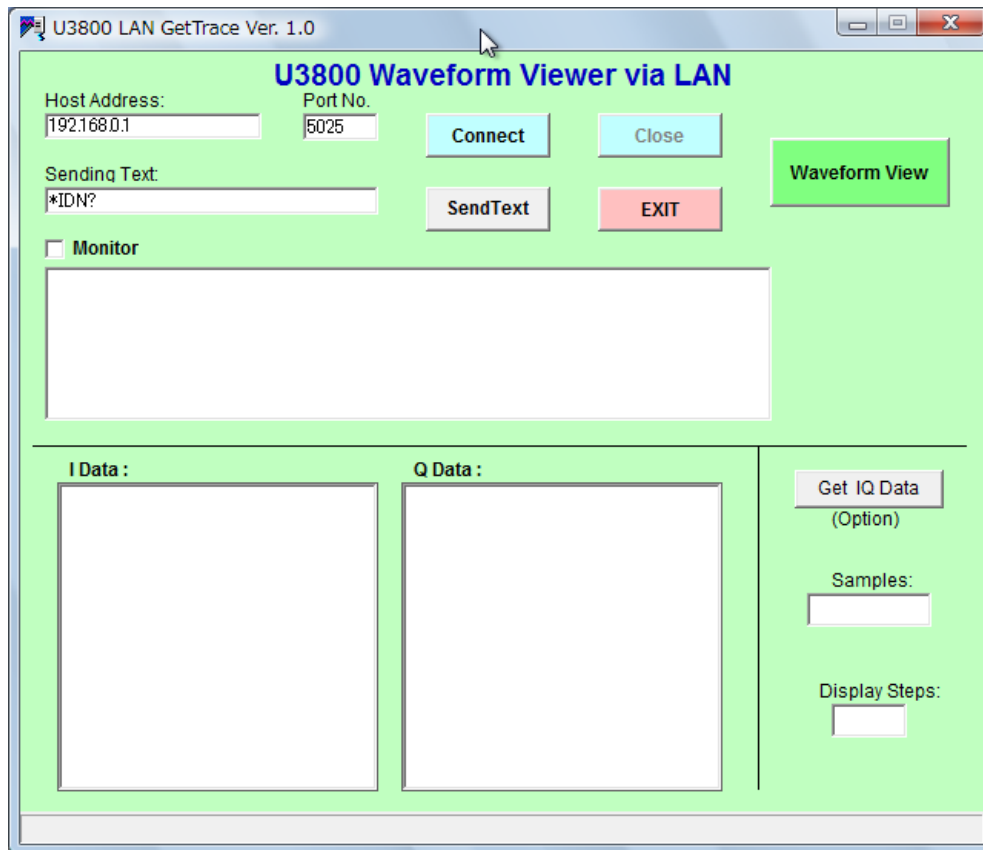
Have to use **CROSS CABLE** for direct connection SPA and PC.

5 . Execute sample software. (example: U3800 LAN GetTrace)

START – Programs – U3800 LAN GetTrace – LAN GetTrace

Set U3800 IP address (192.168.0.1 same as SPA)

The Port No is 5025



Push Connect.

When the connection has connected, the message will be open as follow.

If you check the Monitor, the communication log will be displayed.

Write GP-IB command at Sending Text and push "Send Text" key

And then you can control U3800 series.

Direct connection item is done. The chapter 6 is way of LAN(WAN) connection.

6 . When way of LAN (WAN) connection, set IP address to SPA.

1) Please connect the LAN cable connected with LAN (WAN) to SPA.

(It is same as connecting the LAN cable with the personal computer.)

2) Set IP Address of SPA.

SYSTEM – Config.– Remote Control – LAN IP Address

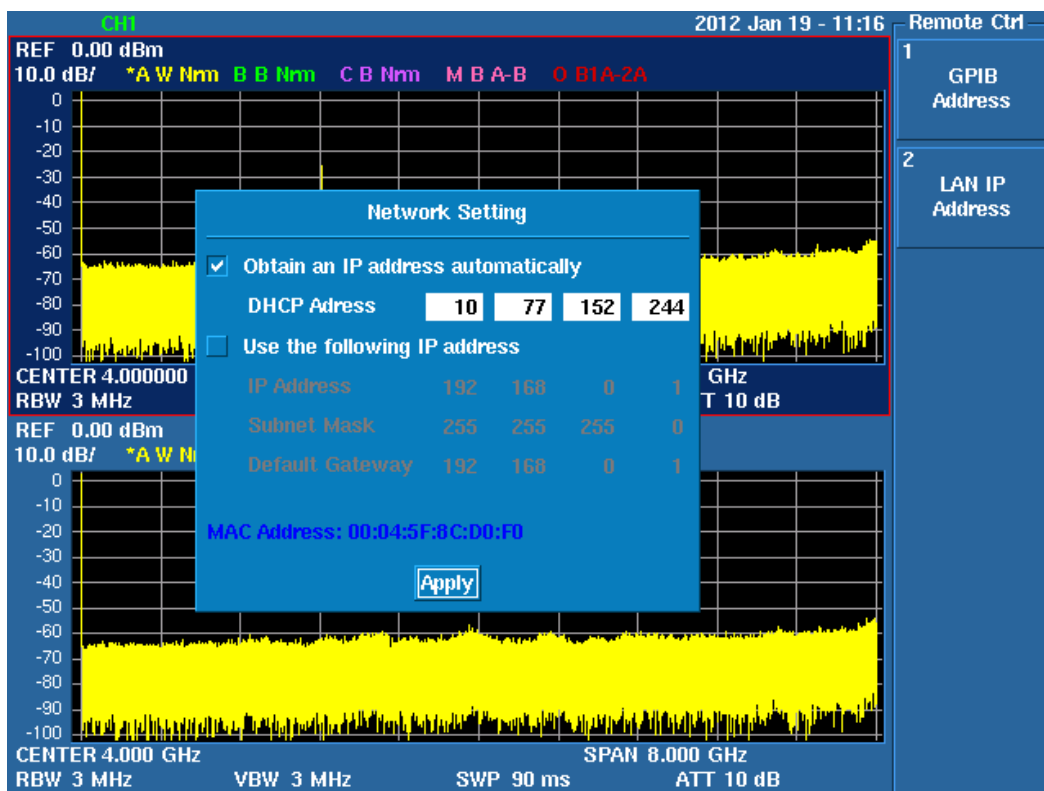
You can use DHCP: check the Obtain an IP address automatically, and set Apply.

If you want to connect to fixed IP address, please ask IP address to network manager.

Then, set the IP address. (Using Knob, Up-down, Ten-key, Hz-key)

You get this Analyzer's IP address for application software.

Sample of obtain an IP address automatically.



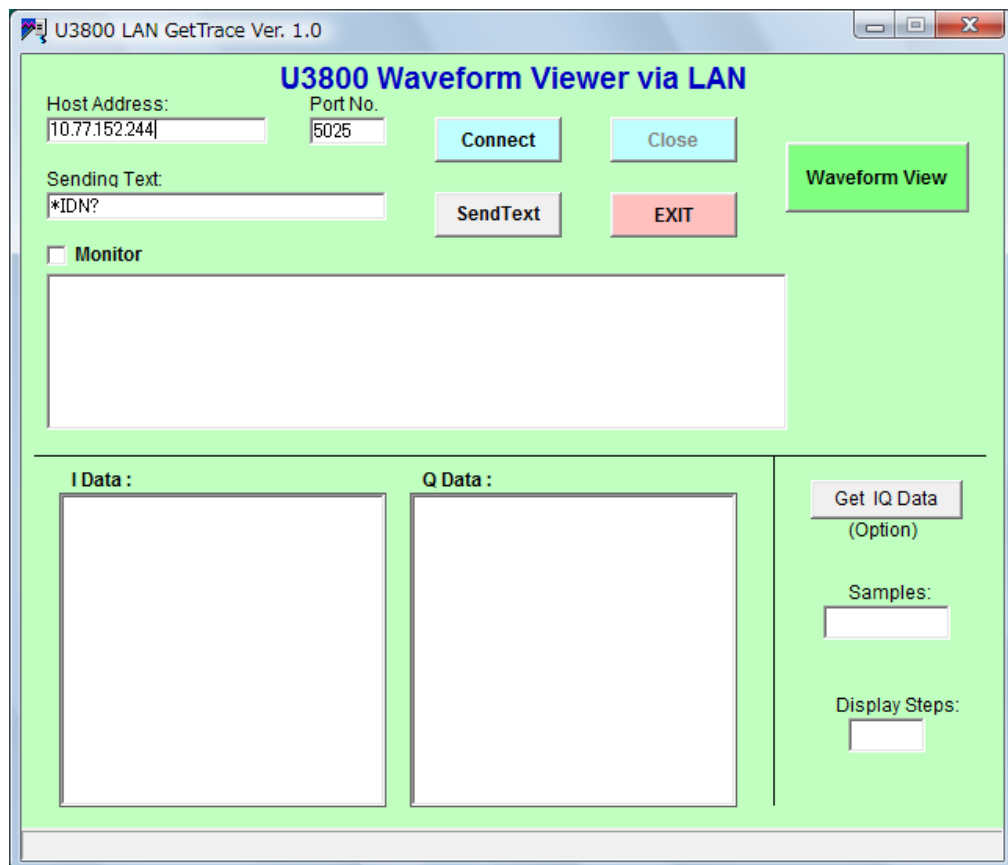
3) Input IP address to the application software. (example: U3800 LAN GetTrace)

START – Programs – U3800 LAN GetTrace – LAN GetTrace

Set U3800 IP address to Host Address of application software. (10.77.152.244)

IP address is the obtained automatic acquisition or the allocated fixed address.

The Port No is 5025



Push Connect.

When the connection has connected, the message will be open as follow.

If you check the Monitor, the communication log will be displayed.

Write GP-IB command at Sending Text and push "Send Text" key

And then you can control U3800 series.

(Please set Monitor Off before select the Waveform View.)