

# Waveform Display sample software via LAN V1.0

ADVANTEST

## 1. Install U3800 LAN DspTrace sample software into PC

Installer is in PackageForU3800 holder.

Source files are in the Source (STD) folder and refer from Visual Basic.

## 2. Set U3700 series IP address

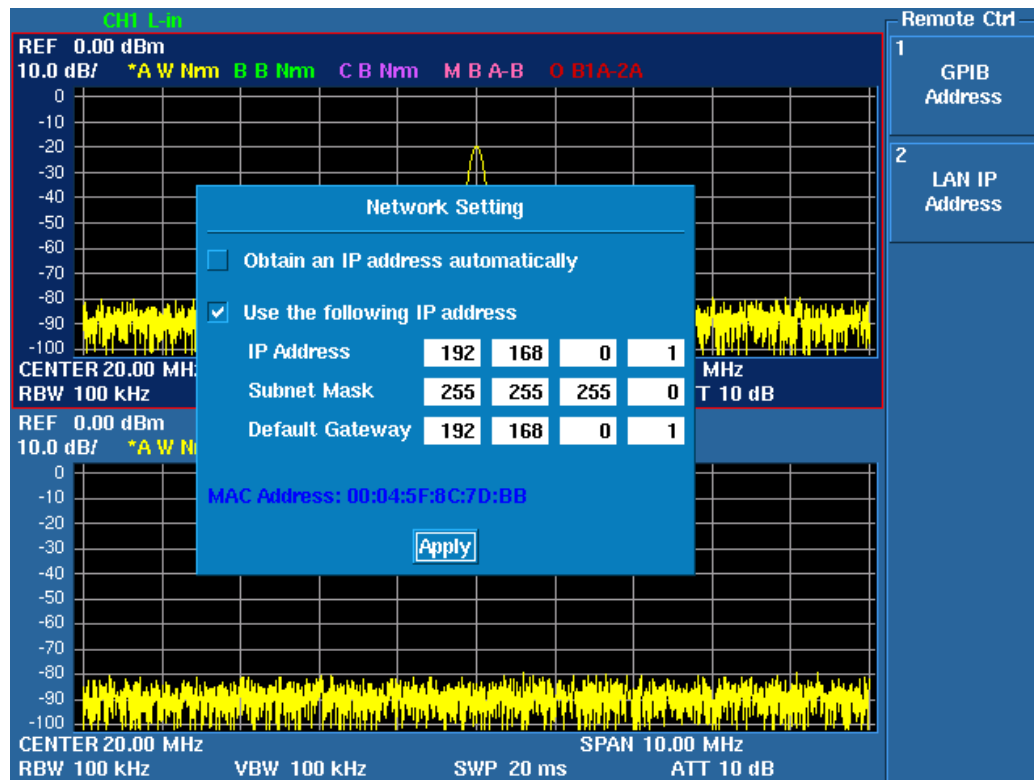
SYSTEM – Config.– Remote Control – LAN IP Address

The following figure shows direct input an IP address example.

You can use DHCP: check the Obtain an IP address automatically, and set Apply.

If you want to connect to fixed address, please ask IP address to network manager.

You get this Analyzer's IP address.



### 3. Set PC IP address

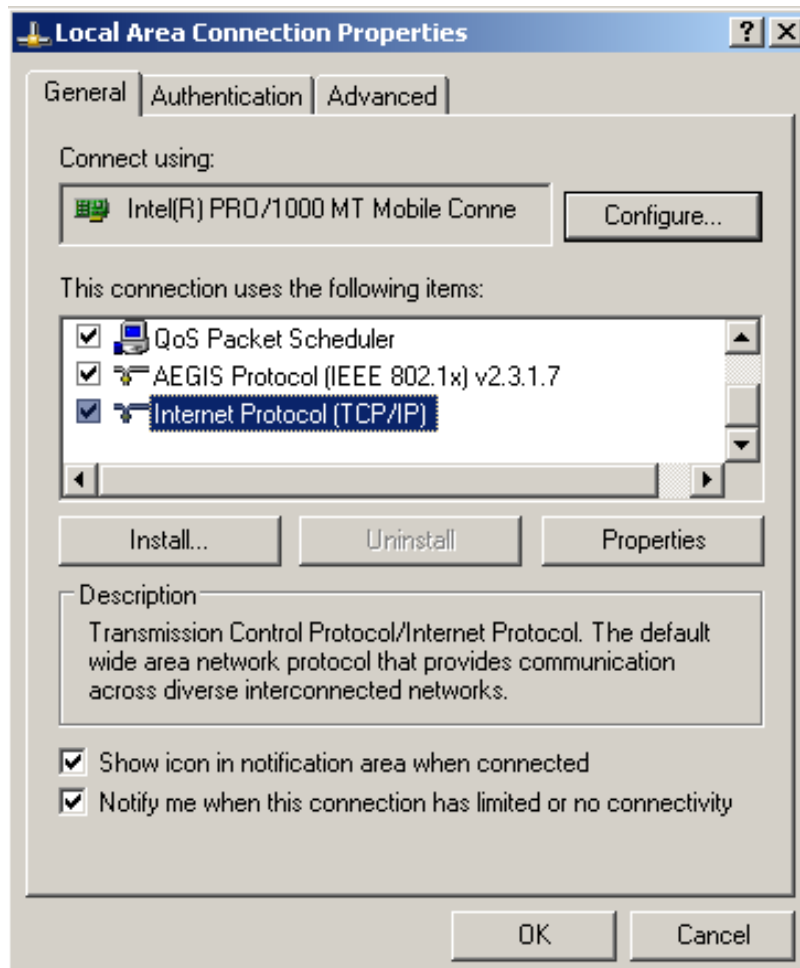
Just only for Point-to-Point connection. No necessary for LAN network connection.

For WIN2000

My network – Right click - Properties –

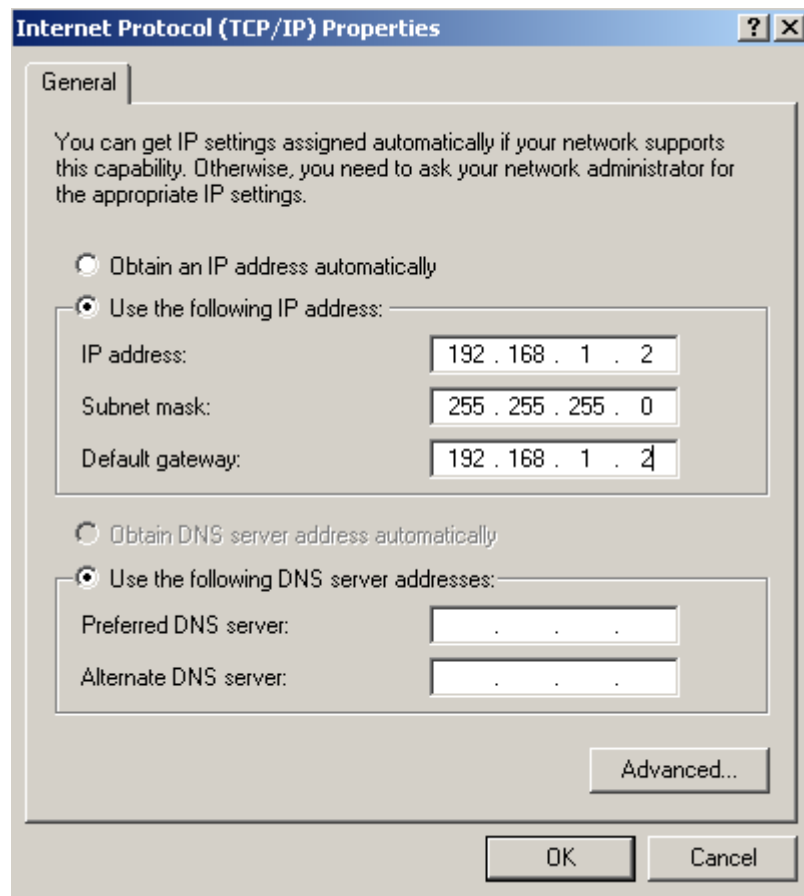
Local Area Connection - Right click - Properties –

Internet Protocol (TCP/IP) – Properties



## Set IP Address

This IP address has to be set difference number from U3800 series.



## 4. Connect LAN cable

Have to use **CROSS CABLE** for Point-to-Point connection.

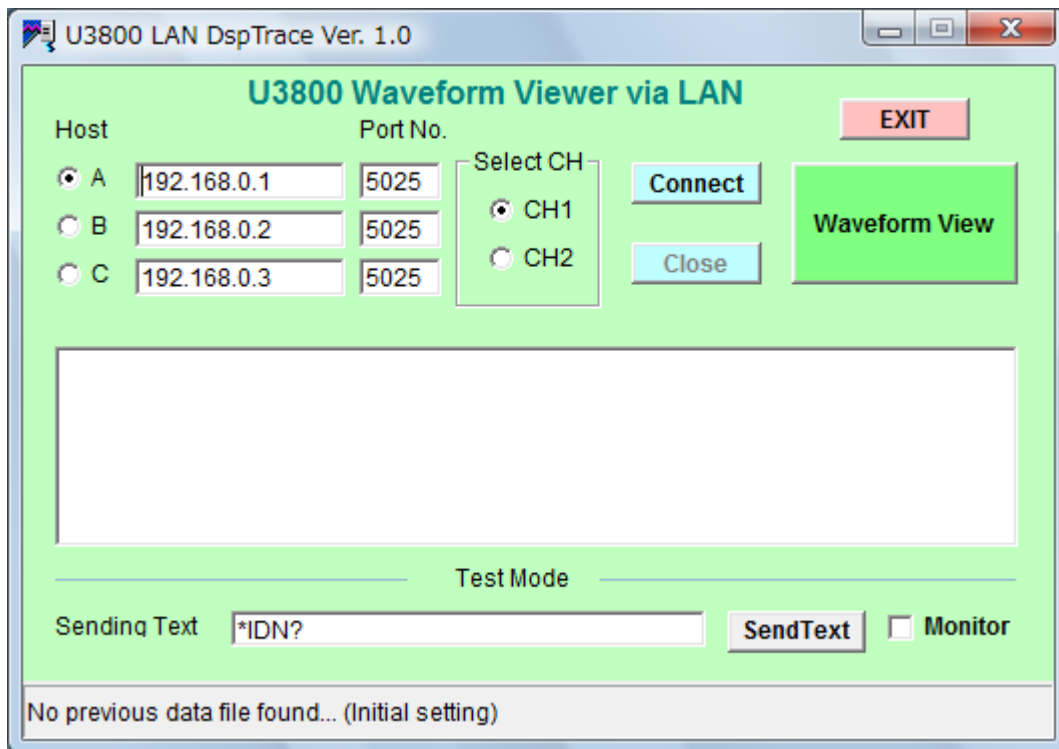
**5. Open sample software (Main Menu)**

START – Programs – U3800 LAN DspTrace – LAN DspTrace

Set U3800 series IP address (Note: Auto Save/Power on recall items)

(Note: Please select A or B or C)

The Port No is 5025



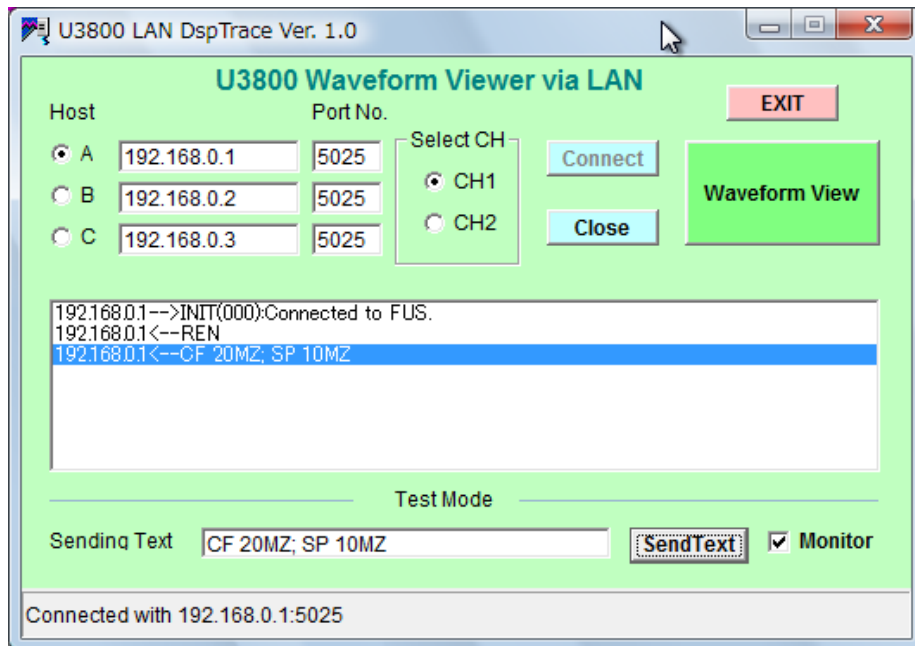
**6. Push Connect**

When the connection has connected, the message will be open as follow.

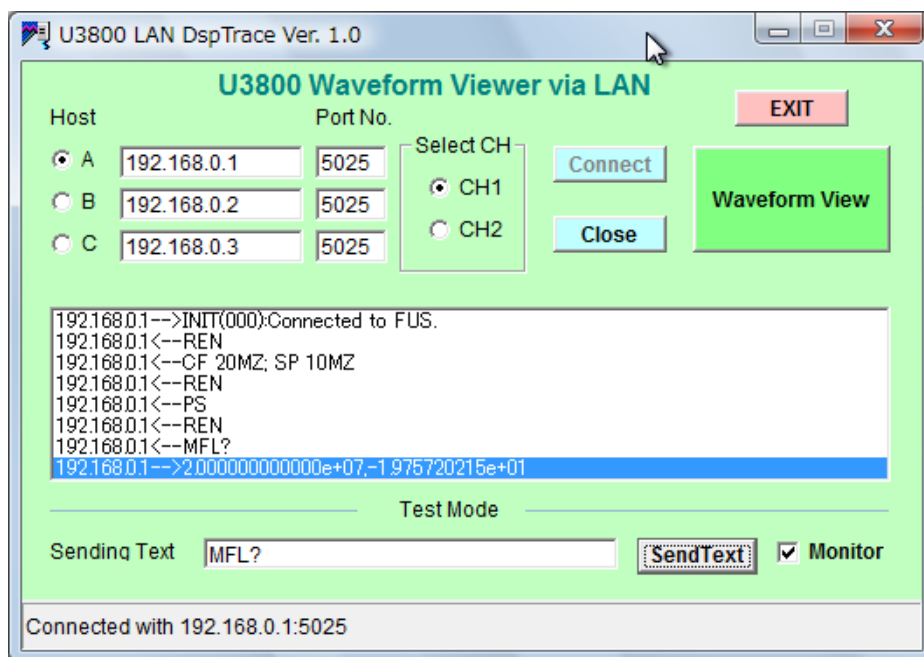
If you check the Monitor, the communication log will be displayed.

Write GP-IB command at Sending Text and push "Send Text" key

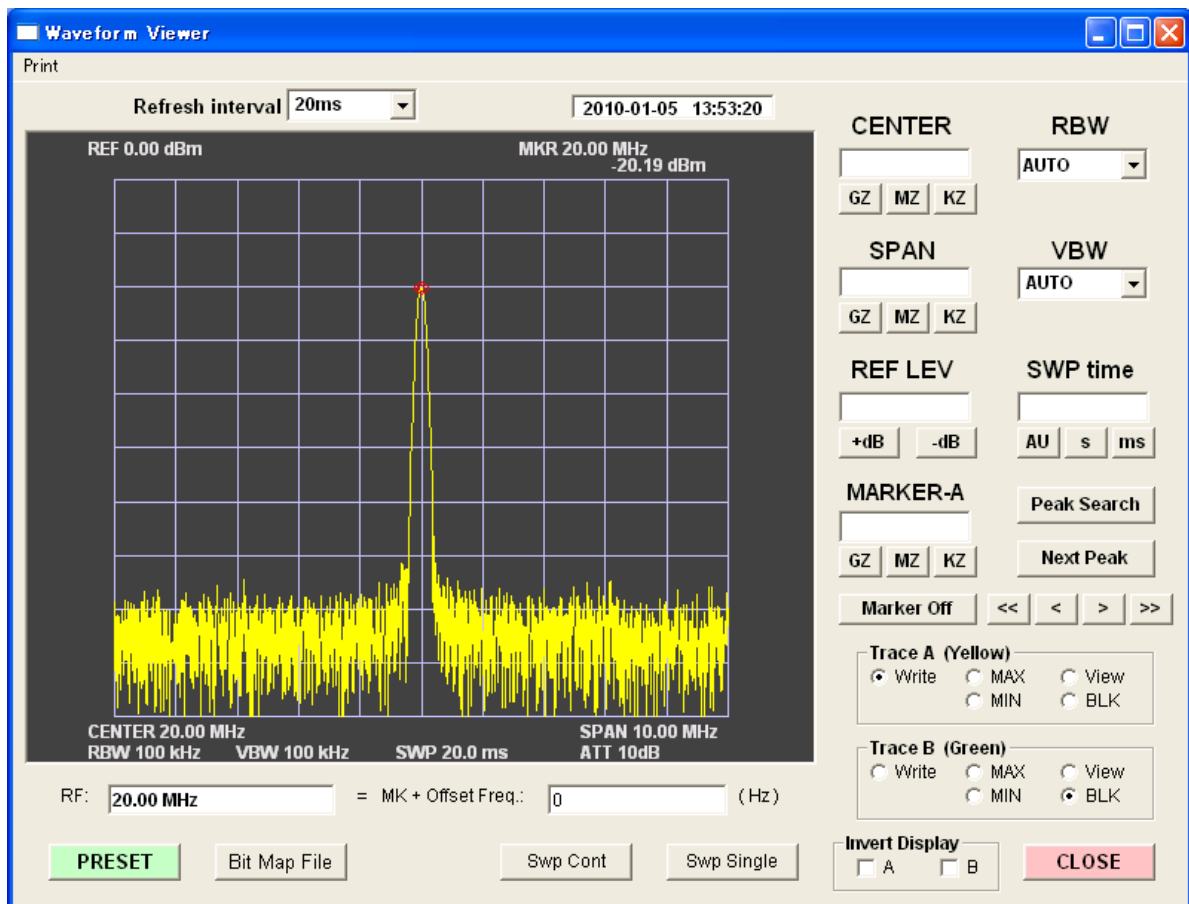
And then you can control U3800 series.



Send query command and then the returned data will be displayed.



Push "Waveform View" key, the measurement screen will be displayed.  
(Please set Monitor Off before push the Waveform View.)



There are basic parameter setting key and can change parameters.

(Center, Span, Ref level, RBW, VBW, Marker, Trace A/B Mode, Sweep Mode)

The "BMP" key saves Bit Map file into PC.

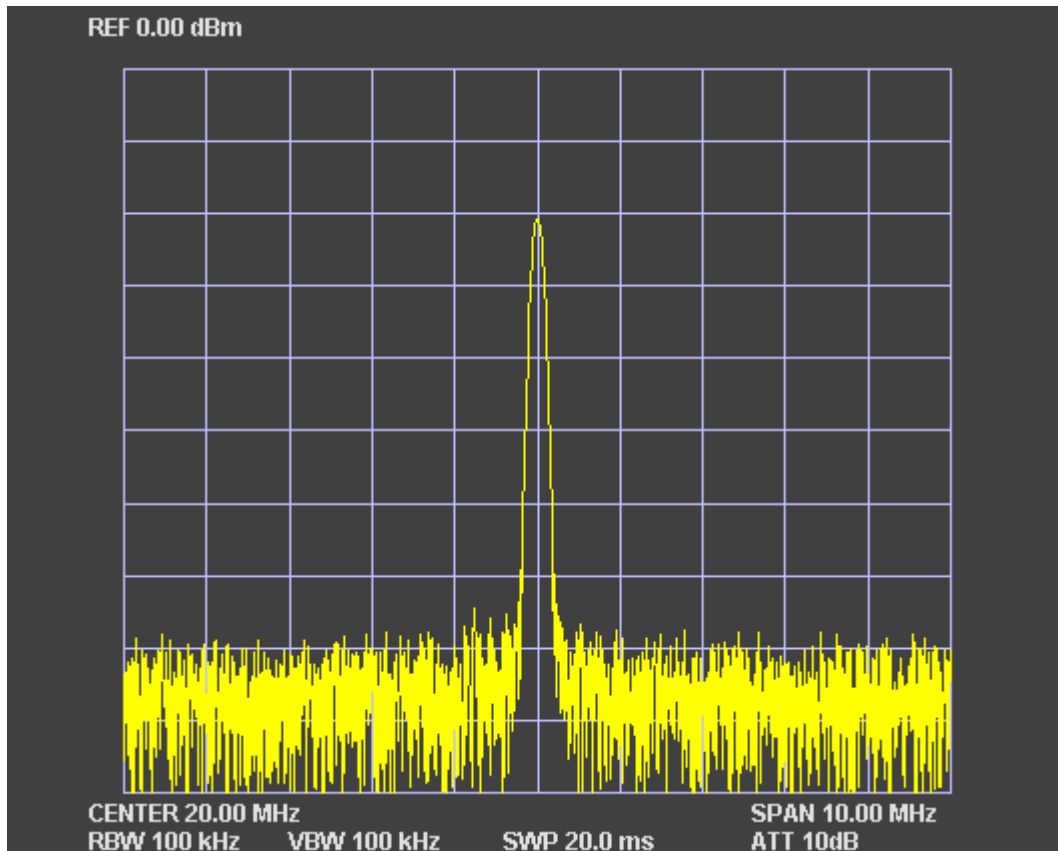
The "PRESET" key preset U3800 series setting.

The "CLOSE" key goes back to main menu.

RF display = Marker Frequency + Offset Frequency

You can see invert display trace A or B, when you check the menu A or B.

Bit Map sample data.



**7. Shut down the program.**

First, back to Main Menu. (Push CLOSE)

The "Close" key stops the LAN connection.

The "EXIT" key shuts down this program.