

General-Purpose Performance Boards

● T2000 Test Systems

Test Systems	Test Heads	HIFIX Types	Performance Boards	Probe Contacts	Probe Cards	Remarks
T2000 SPMF	52-slot TH	RND440	T102755			
T2000 MSMF						
T2000 LSMF	52-slot TH	RECT550	T103319			Outer LIF & Inner LIF Support
			T105424			RF Mother Board (4DUT)
	26-slot TH	RECT550	T103320			Outer LIF & RF Support
			T105424			RF Mother Board (4DUT)
T2000 GSMF	13-slot TH	RECT310	T103305			Outer LIF Support
			T103313			General-Purpose Wafer PB

● SoC Test Systems

Test Systems	Test Heads	HIFIX Types	Performance Boards	Probe Contacts	Probe Cards	Remarks	
T6575/65/35 T6575A/65A/35A T6573/63/33 for Wafer	512-channel Square	H7-1138	T102176	H3-90256	T11147	SQ General-Purpose Wafer PB & Ø200 PC SQ-AP General-Purpose Wafer PB & Ø200 PC SQ-AP General-Purpose Wafer PB & Ø200 SB	
	512-channel Square AP	H7-110138*	T103106		T102248		
	512-channel Square AP EMC-prevention product	H7-110138X02*		T11148			
	512-channel Pogo	H3-93806X02	T100662	H3-90256	T11147	General-Purpose Wafer PB & Ø200 PC	
	512-channel AV2 Pogo	H3-94021	T102440		T102248	General-Purpose Wafer PB & Ø200 PC	
512-channel ZIF	H3-93851	T101761		T11148	General-Purpose Wafer PB & Ø200 SB		
T6575/65/35 T6575A/65A/35A T6573/63/33 for Handler	512-channel ZIF	H3-93851	T100563		T100563	Ø305 General-Purpose PC	
	512-channel Square	H7-1138	T101476		T101476		
	512-channel Square AP	H7-110138*	T101601		T101601		
	512-channel Square AP EMC-prevention product	H7-110138X02*	T103107			Ø305 General-Purpose Manual PB	
	512-channel Pogo	H7-93806X02	T100648			480 x 480 Manual PB	
	512-channel AV2 Pogo	H3-94021	T100661			480 x 480 Manual PB	
T6577/67 for Wafer	1024-channel Square AP	H7-110127	T101383			480 x 480 Manual PB	
			T103105	H7-910081	(Custom PB)	SQ Wafer PB & SQ Frag Unit	
	1024-channel Square AP HCDPS	H7-110130	T103146	H7-910381	T11147	AP SQ Wafer PB & Frag Unit & Ø200 mm General-Purpose PC	
				H3-90256	T100244	SQ Wafer PB & PB Assy & Transfer PC (Ø137)	
	512-channel AV2 Pogo	H7-110013	T101761 T102440 T100662	H7-910381	T11147	Wafer PB & Frag Unit & 200 mm PC	
				H3-90256	T100244	Wafer PB & Frag Unit & 200 mm PC	
	512-channel Pogo	H7-110012	T101761 T102440 T100662	H7-910381	T11147	Wafer PB & Probing Assy & Transfer PC (Ø137)	
				H3-90256	T100244	Wafer PB & Probing Assy & Transfer PC (Ø137)	
	1024-channel ZIF	H7-110014			T100563 T101476 T101601	Ø305 General-Purpose PC	
	T6577/67 for Handler	1024-channel Square	H7-110011	T102151			SQ PB
T103107						AP SQ PB	
1024-channel Square AP HCDPS		H7-110130	(Custom PB)	T102151			SQ PB
				T103107			AP SQ PB
512-channel AV2 Pogo		H7-110013	T101383			AV2 PB	
512-channel Pogo		H7-110012	T100648 T100661 T11157			PB	
1024-channel ZIF	H7-110014	T100564A			Ø305 General-Purpose PB		
T6672/73 for Wafer	1024-channel ZIF	H7-1032			T100563 T101476 T101601	Ø305 PC	
	1024-channel HCDPS ZIF	H7-1103X02					
	1024-channel Mixed ZIF	H3-010008					
	512-channel HCDPS Pogo	H7-1119	T102322	H3-90256		T6672 HCDPS Wafer PB & Probing Assy	
	512-channel Audio Pogo	H7-1030	T102440 T100662	H3-90256	T11147	512-channel T6671E-Compatible PC	
					T101761	512-channel T6671E-Compatible SB	
1024-channel Square	H7-1106	T102176		T102248	512-channel T6671E-Compatible PC		

* SQUARE AP HIFIX are not available with T6573/63/33.

Test Systems	Test Heads	HIFIX Types	Performance Boards	Probe Contacts	Probe Cards	Remarks
T6672/73 for Manual/Handler	512-channel Audio Pogo	H7-1030	T100648 T100661 T11144 T11157			512-channel Manual Wafer PB
	384-channel Mixed Pogo	H7-1031	T100648 T100661 T11144 T11157			512-channel Manual Wafer PB
	512-channel AV Pogo	H7-1102	T101383			512-channel AV/AV2 Manual PB
	512-channel AV2 Pogo	H7-1105				
	1024-channel Square	H7-1106	T102151			1024-channel SQ Manual PB
	1024-channel ZIF	H7-1032	T100564 T100564A			1024-channel General PB T6672/82 1024-channel Manual PB
T6682 for Wafer	1024-channel ZIF	H7-1029			T100563 T101476 T101601	Ø305 PC
	1024-channel HCDPS ZIF	H7-1103				
	512-channel Audio Pogo	H7-1030	T102440 T100662	H3-90256	T11147 T11148	Wafer PB & Probing Assy & T6671E-Compatible PC Wafer PB & Probing Assy & T6671E-Compatible SB
	512-channel AV2 Pogo	H7-1105	T101761		T102248	Wafer PB & Probing Assy & T6671E-Compatible PC
T6682 for Manual/Handler	512-channel Pogo	H7-1030	T100648 T100661 T11144 T11157			Manual Wafer PB
	384-channel Mixed Pogo	H7-1031	T100648 T100661 T11144 T11157			Manual Wafer PB
	512-channel AV2 Pogo	H7-1105	T101383			512-channel AV/AV2 Manual Wafer PB
	1024-channel ZIF	H7-1029	T100564			1024-channel General PB (Ø305)
			T100564A			1024-channel Manual PB (Ø305)
T6683 for Wafer	1024-channel ZIF	H3-0562			T100563 T101476 T101601	Ø305 PC
	1024-channel HCDPS ZIF	H3-0563			(Custom PC)	
	512-channel Audio Pogo	H3-0585	T102440 T100662	H3-90256	T11147 T11148	Wafer PB & Probing Assy & T6671E-Compatible PC Wafer PB & Probing Assy & T6671E-Compatible SB
	512-channel AV2 Pogo	H3-0564	T101761		T102248	Wafer PB & Probing Assy & T6671E-Compatible PC
T6683 for Manual/Handler	512/1024-channel Pogo	H3-0585	T100648 T100661			512-channel Audio Pogo Manual Wafer PB
		H3-0564	T101383			512-channel AV2 Pogo Manual PC
	1024-channel ZIF	H3-0562	T100564			1024-channel General-Purpose PB
			T100564A			1024-channel Manual PC
			(Custom PB)			1024-channel Mixed 2 ZIF

● LCD Driver Test Systems

Test Systems	Test Heads	HIFIX Types	Performance Boards	Probe Contacts	Probe Cards	Remarks
T6371/61/31 for Wafer/Handler	1280-channel Pogo	H3-93870	T102985			1280-channel Pogo Prober Type
		H3-93870	T101919			1280-channel Pogo Handler Type
		H3-93870X02/X03	T102985			1280-channel Pogo Handler Type
		H3-93870X02/X03	T101919			1280-channel Pogo Handler Type
T6372/62/32 for Wafer/Handler	1536-channel Pogo	H7-110142	T103227			2176-channel Pogo Prober/Handler PB
		H7-110015	T102985			1536-channel Pogo Prober/Handler PB
		H7-110016	T102985			1536-channel Pogo Prober/Handler PB
		H7-110126	T102985			1280-channel Pogo ND1 Compatible PB
		H7-110126	T101919			1280-channel Pogo ND1 Compatible PB
T6373 for Wafer/Handler	2304-channel	H7-110147	T103259			2304-channel Pogo Prober/Handler PB
			T103227			2176-channel Pogo Prober/Handler PB
			T102985			1536-channel Pogo Prober/Handler PB
		H7-110150	T103259			2304-channel Pogo Prober/Handler PB
			T103227			2176-channel Pogo Prober/Handler PB
			T102985			1536-channel Pogo Prober/Handler PB

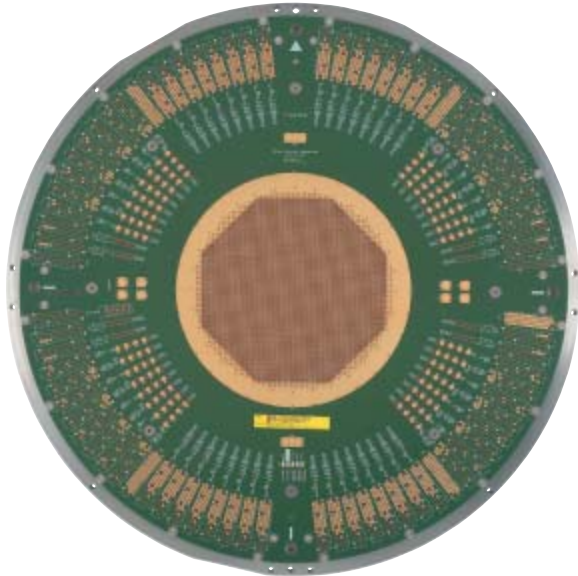
● Mixed-signal Test Systems

Test Systems	Test Heads	HIFIX Types	Performance Boards	Probe Contacts	Probe Cards	Remarks
T7721/22 for Wafer/Handler	DCT Square	H7-110006	T102817	H7-910202	T103232	256-channel General-Purpose Wafer PB & PC
			T103253	H7-910711	T103252	256-channel General-Purpose Wafer PB & PC
			T103253	H7-910813	(Custom PC)	
			T102776			256-channel General-Purpose PB
		H7-110019	T102817	H7-910202	T103232	128-channel General-Purpose Wafer PB & PC
			T103253	H7-910711	T103252	128-channel General-Purpose Wafer PB & PC
T7723 for Wafer/Handler	Square	H7-110156	T103253	H7-910813	(Custom PC)	
			T102776			128-channel General-Purpose PB
			T103309	H7-910991	(Custom PC)	256-channel General-Purpose Wafer PB (480 x 550)
			T103303			256-channel General-Purpose PB (480 x 550)

Performance Boards for Coaxial LIF Manual Test

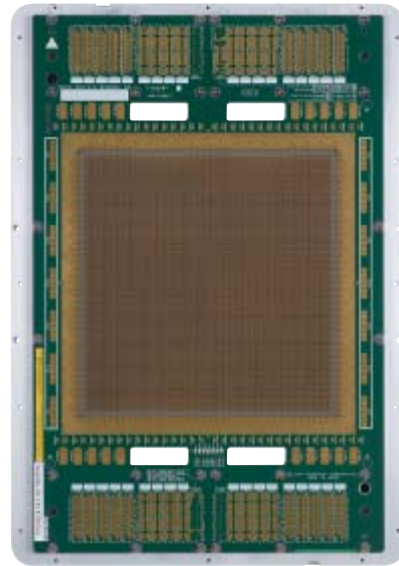
T2000

T102755 ■ Performance Board for Manual Test



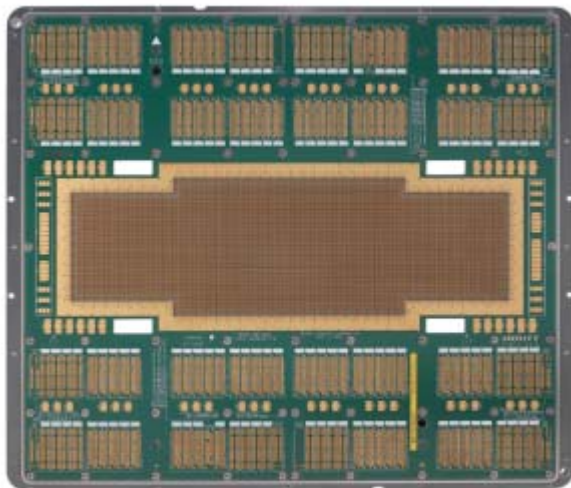
Product code	T102755
Diameter	Ø440 mm
Board thickness	4.7 mm
Type	RND440
Remarks	MANUAL PB 250 MHz DM/LCDPS support

T103305 ■ Performance Board for Manual Test



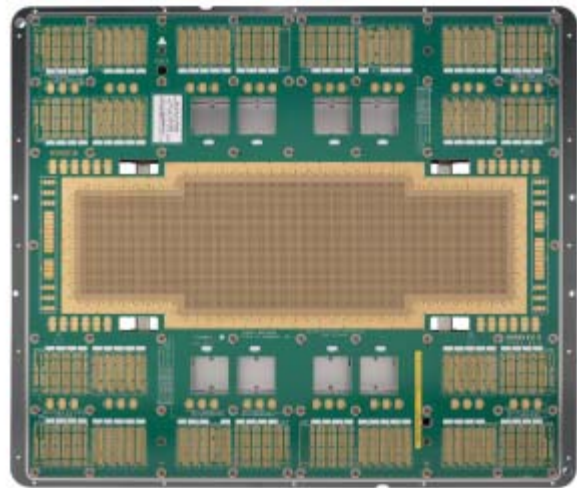
Product code	T103305
Diameter	480 x 310 mm
Board thickness	4.7 mm
Type	RECT310
Remarks	Sync. Generator/Matrix 16 Module (SGM16) support

T103319 ■ General-Purpose Performance Board



Product code	T103319
Diameter	550 x 480 mm
Board thickness	4.7 mm
Type	RECT550 TYPE2
Remarks	192-channel Relay Control 5V Module (RC5V192) support

T103320 ■ RF General-Purpose Performance Board

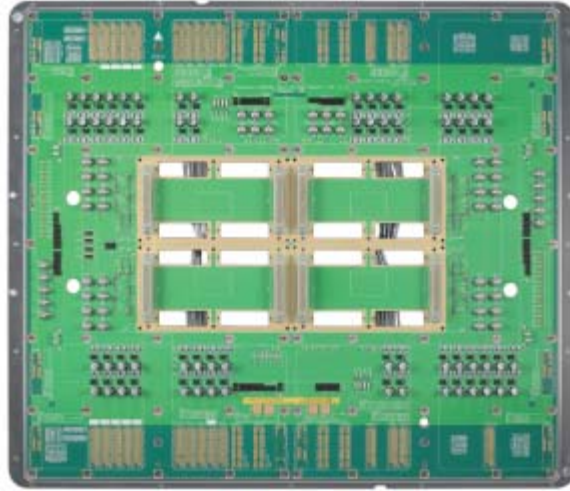


Product code	T103320
Diameter	550 x 480 mm
Board thickness	4.7 mm
Type	RECT550 TYPE2
Remarks	192-channel Relay Control 5V Module (RC5V192)/ RF Module support (RF connector cable optional)

RF Mother Performance Board

T2000

T105424 ■ RF Mother Performance Board (4DUT)



Product code	T105424
Diameter	550 x 480 mm
Board thickness	4.7 mm
Type	RECT550 TYPE2
Remarks	256-channel Relay Control 5V Module (RC5V)/ RF Module support

Frog Units for Prober

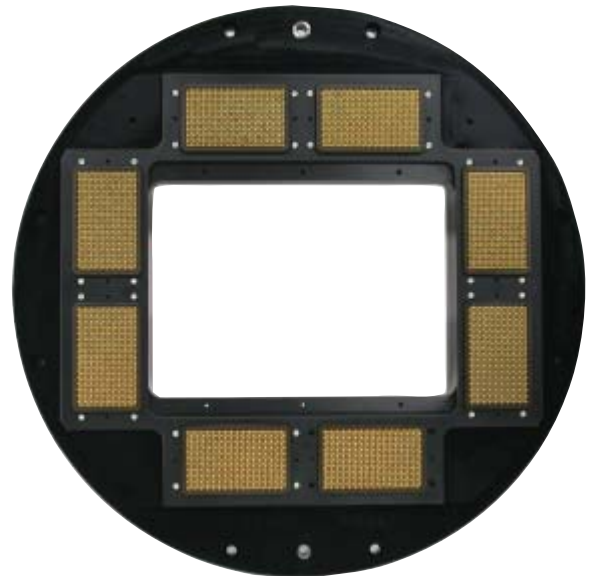
H7-910081/H7-911005 ■ 1024-channel Square Frog Unit

H7-911006 ■ 512-channel Square Frog Unit



Photo is H7-910081

H7-910922 ■ 2048-channel Frog Unit



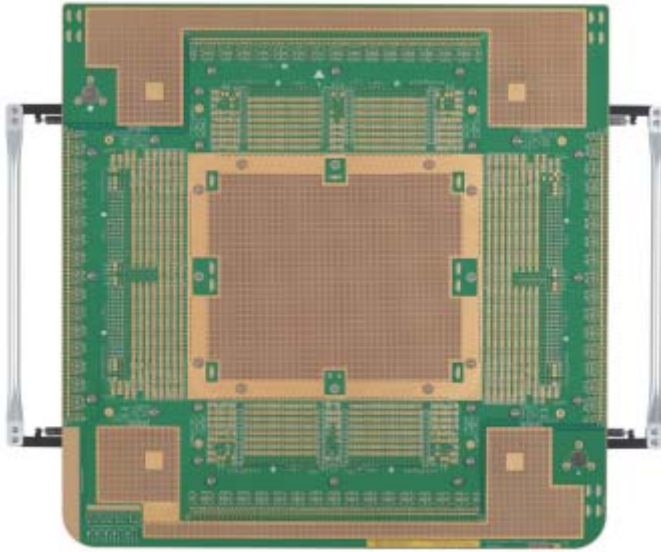
Product code	H7-910081	H7-911005	H7-911006
Number of channels	1024		512
Diameter	Ø330 mm (Ø344 mm including the Lock Handle), Height 81 mm		
Weight	8 kg		
Supported Test System	T6672/T6673 T6567/T6577	T2000 (RECT550)	T2000 (RECT550/310)
Supported PC size	250 x 250 mm		

Product code	H7-910922
Diameter	Ø480mm, Height 81 mm
Weight	15 kg
Supported Test System	T2000 (RECT550)
Supported PC size	Ø440 mm

SQUARE Performance Boards for Manual Test

T6672/T6673/T6573/T6563/T6533/T6575/T6565/T6535/T6577/T6567

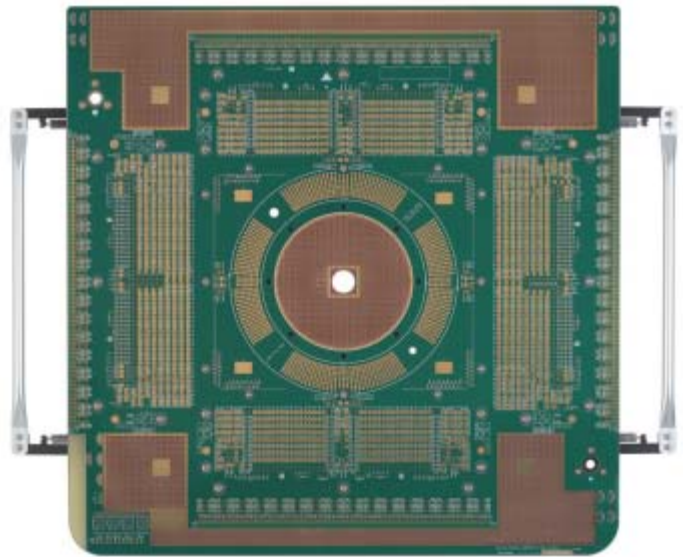
T103107 ■ Performance Board for Manual Test



Product code	T103107
Size	480 x 480 mm
Board thickness	4.8 mm
Type	1024-channel SQUARE AP
Supported HIFIX	H7-110127/H7-110011/H7-110138/H7-1106*
Remarks	MANUAL PB

**: When used with H7-1106, certain signal names should be read differently.*

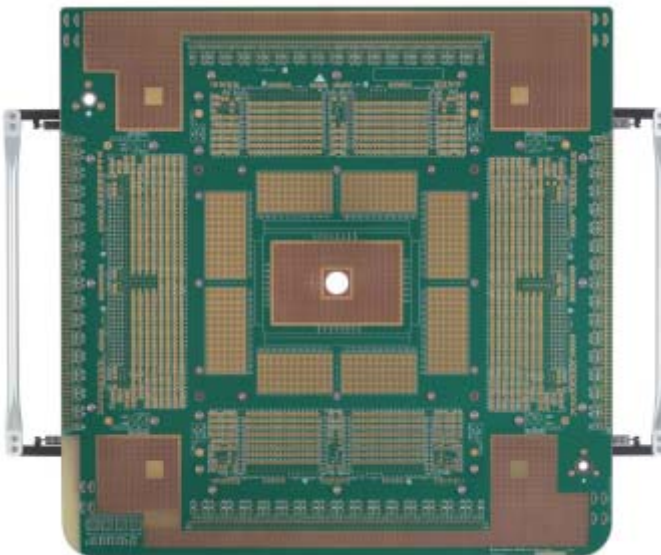
T103106 ■ Performance Board for Prober



Product code	T103106
Size	480 x 480 mm
Board thickness	4.8 mm
Type	512-channel SQUARE AP
Supported HIFIX	H7-110127/H7-110011/H7-110138/H7-1106*
Remarks	WAFER PB

**: When used with H7-1106, certain signal names should be read differently.*

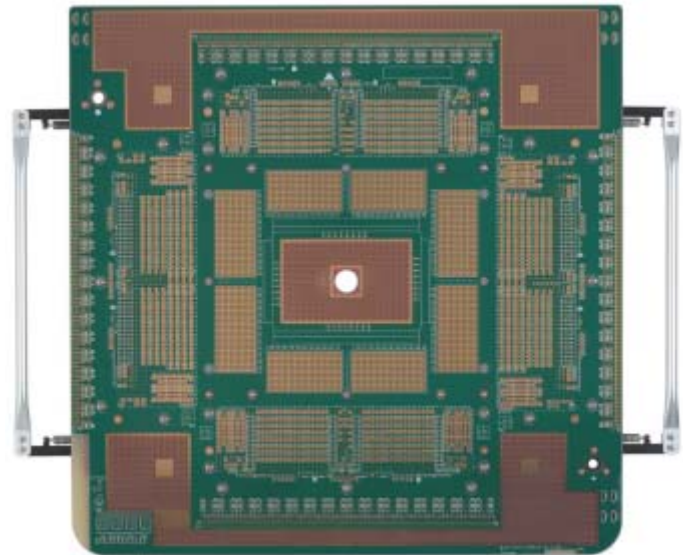
T103105 ■ Performance Board for Prober



Product code	T103105
Size	480 x 480 mm
Board thickness	4.8 mm
Type	1024-channel SQUARE AP
Supported HIFIX	H7-110127/H7-110011/H7-110138/H7-1106*
Remarks	WAFER PB

**: When used with H7-1106, certain signal names should be read differently.*

T103146 ■ Performance Board for Prober

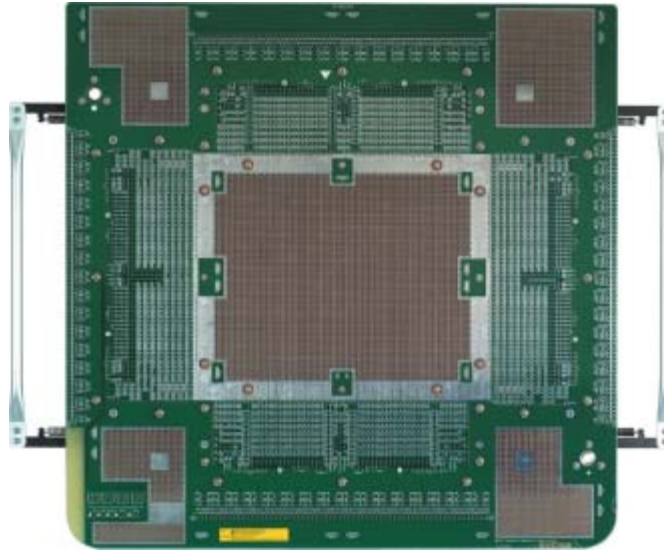


Product code	T103146
Size	480 x 480 mm
Board thickness	4.8 mm
Type	1024-channel SQUARE AP HCDPS
Supported HIFIX	H7-110130
Remarks	HCDPS WAFER PB

SQUARE (1024-channel) Performance Board for Manual Test

T6672/T6673/T6573/T6563/T6533/T6575/T6565/T6535/T6577/T6567

T102151 ■ Performance Board for Manual Test



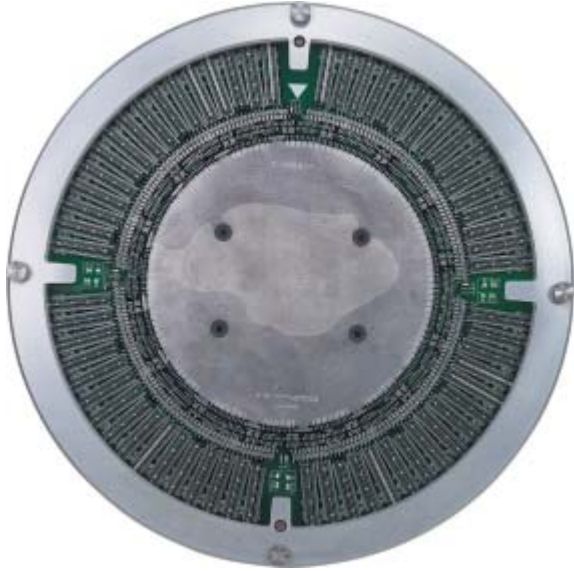
Product code	T102151
Size	480 x 480 mm
Board thickness	4.8 mm
Type	1024-channel SQUARE
Supported HIFIX	H7-1106/H7-110011//H7-110127*/H7-1138
Remarks	MANUAL PB

*: When used with H7-110127, certain signal names should be read differently.

ZIF (1024-channel) Performance Board for Manual Test

T6672/T6673/T6682/T6683/T6573/T6563/T6553/T6565/T6535/T6577/T6567

T100564A ■ Performance Board for Manual Test

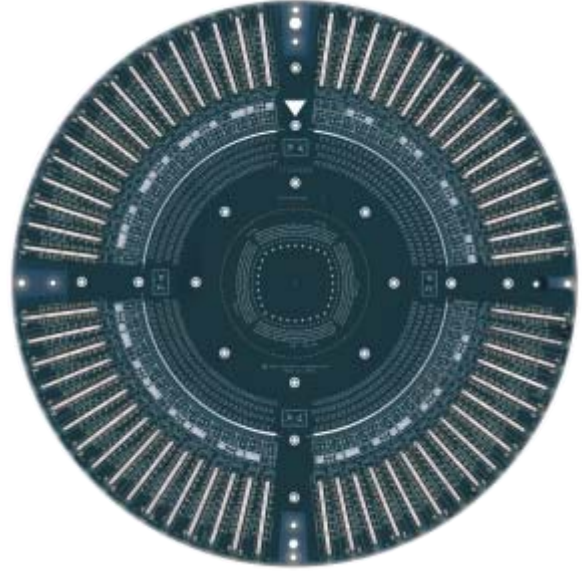


Product code	T100564A
Diameter	Ø305 mm
Board thickness	4.8 mm
Type	1024-channel ZIF
Supported HIFIX	H3-1029/32/H3-0562/H3-93851/H7-110014
Remarks	MANUAL PB

ZIF (1024-channel) Probe Card

T6672/T6673/T6682/T6683/T6573/T6563/T6553/T6565/T6535/T6577/T6567

T100563 ■ Probe Card Board

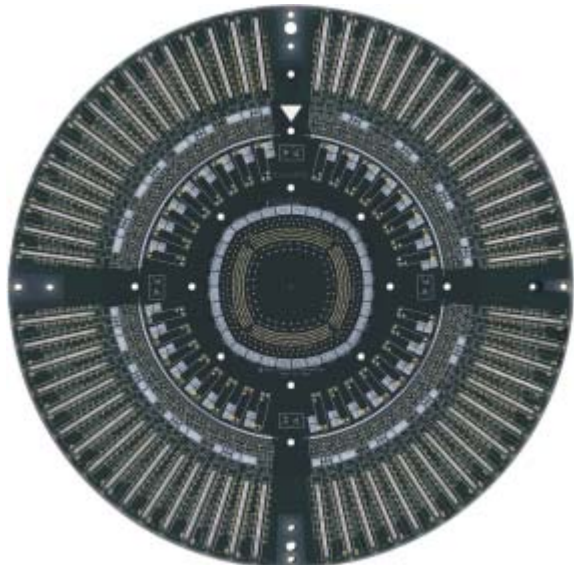


Product code	T100563
Diameter	Ø305 mm
Board thickness	4.8 mm
Type	1024-channel ZIF
Supported HIFIX	H3-1029/32/H3-0562/H3-93851/H7-110014
Remarks	512-channel PC

ZIF (1024-channel) Probe Cards

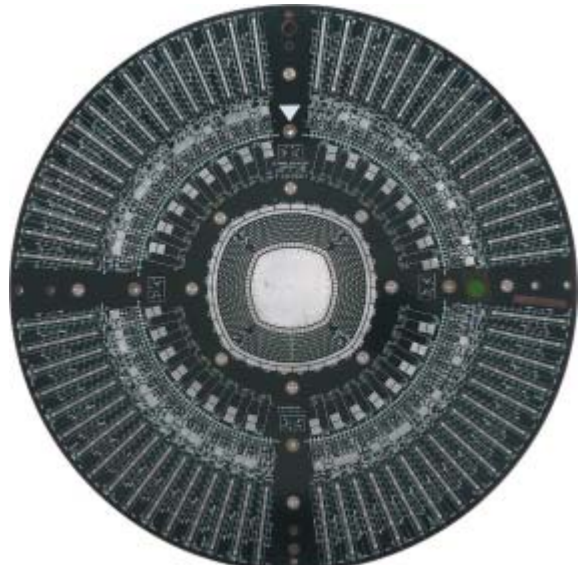
T6672/T6673/T6682/T6683/T6573/T6563/T6553/T6565/T6535/T6577/T6567

T101476 ■ Probe Card Board



Product code	T101476
Diameter	Ø305 mm
Board thickness	4.8 mm
Type	1024-channel ZIF
Supported HIFIX	H3-1029/32/H3-0562/H3-93851/H7-110014
Remarks	512-channel PC (reinforced power supply)

T101601 ■ Probe Card Board

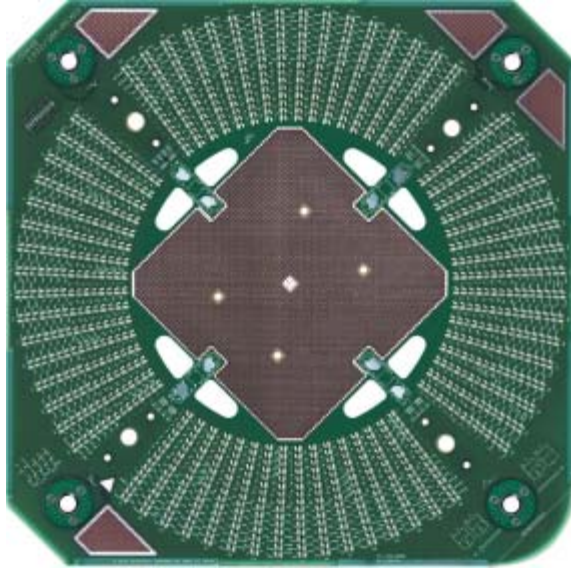


Product code	T101601
Diameter	Ø305 mm
Board thickness	4.8 mm
Type	1024-channel ZIF
Supported HIFIX	H3-1029/32/H3-0562/H3-93851/H7-110014
Remarks	1024-channel PC

T6671E-Compatible (512-channel) Performance Boards for Manual Test

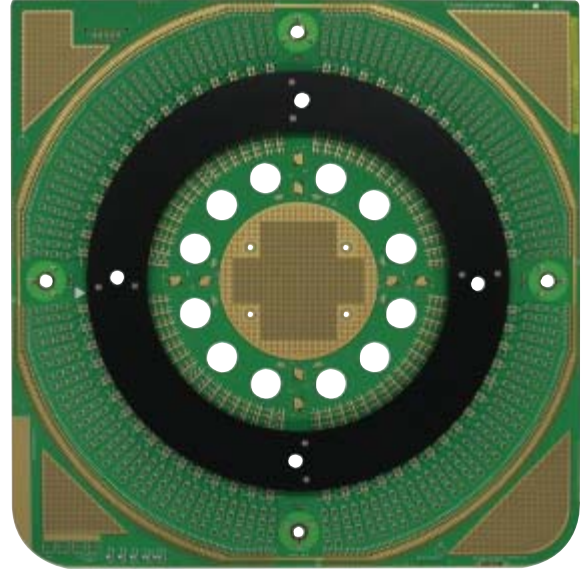
T6672/T6673/T6682/T6683/T6573/T6563/T6553/T6565/T6535/T6577/T6567

T100648 ■ Performance Board for Manual Test



Product code	T100648
Diameter	380 x 380 mm
Board thickness	2.2 mm
Type	512-channel T6671E-compatible (384-channel + MIXED)
Supported HIFIX	H7-1030/31/H3-93806X02/H3-0585/H7-110012
Remarks	MANUAL PB (without load relay)

T100661 ■ Performance Board for Manual Test

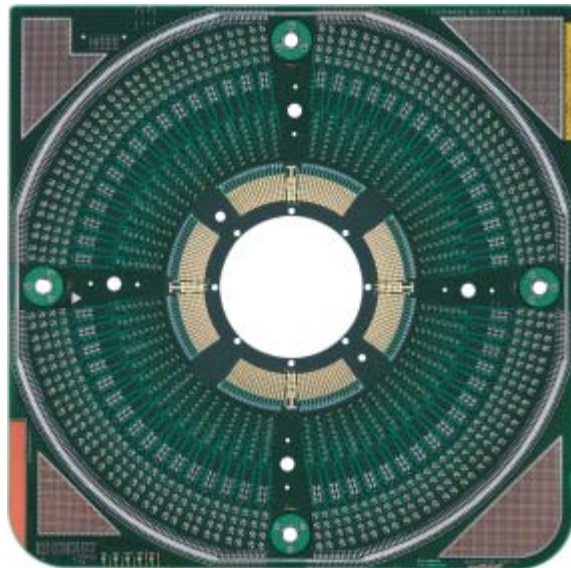


Product code	T100661
Diameter	480 x 480 mm
Board thickness	2.2 mm
Type	512-channel T6671E-compatible (384-channel + MIXED)
Supported HIFIX	H7-1030/31/H3-93806X02/H3-0585/H7-110012
Remarks	MANUAL PB (with load relay)

T6671E-Compatible (512-channel) Performance Boards for Prober

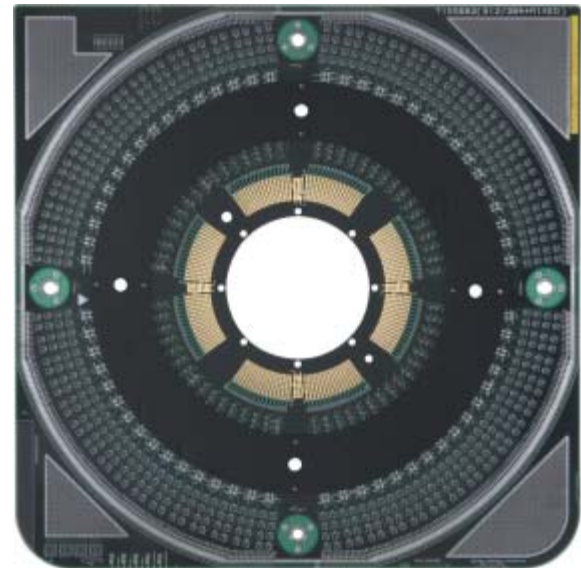
T6672/T6673/T6682/T6683/T6573/T6563/T6553/T6565/T6535/T6577/T6567

T102440 ■ Performance Board for Prober



Product code	T102440
Diameter	480 x 480 mm
Board thickness	4.8 mm
Type	512-channel T6671E-compatible (384-channel + MIXED)
Supported HIFIX	H7-1030/H3-93806X02/H3-0585/H7-110012/13
Remarks	WAFER 16 PPS supported

T100662 ■ Performance Board for Prober

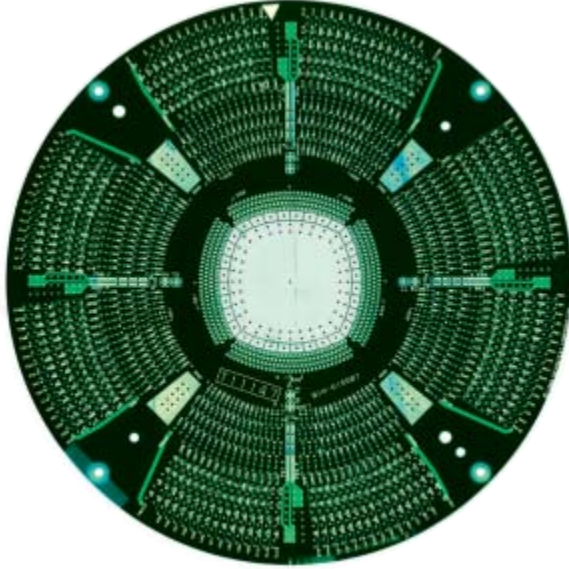


Product code	T100662
Diameter	480 x 480 mm
Board thickness	4.8 mm
Type	512-channel T6671E-compatible (384-channel + MIXED)
Supported HIFIX	H7-1030/H3-93806X02/H3-0585/H7-110012/13
Remarks	WAFER PB

T6671E-Compatible (512-channel) Probe Cards

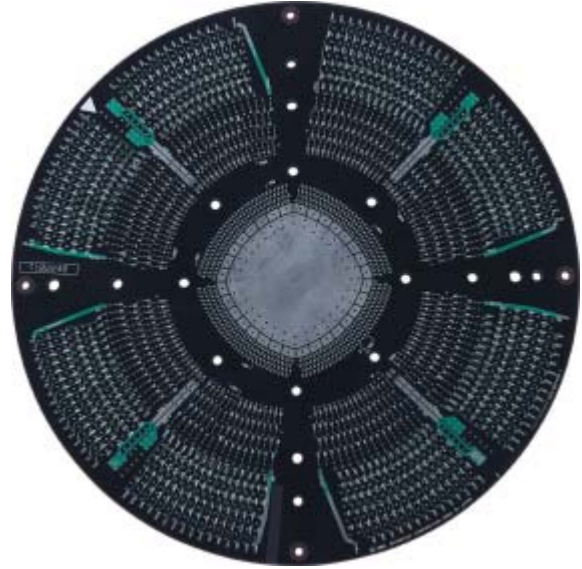
T6672/T6673/T6682/T6683/T6573/T6563/T6553/T6565/T6535/T6577/T6567

T11147 ■ Probe Card



Product code	T11147
Diameter	Ø200 mm
Board thickness	4.8 mm
Type	512-channel T6671E-compatible (384-channel + MIXED)
Supported PB	T100662/T102176/T103106/T101761/T102440
Remarks	512-channel PC

T102248 ■ Probe Card

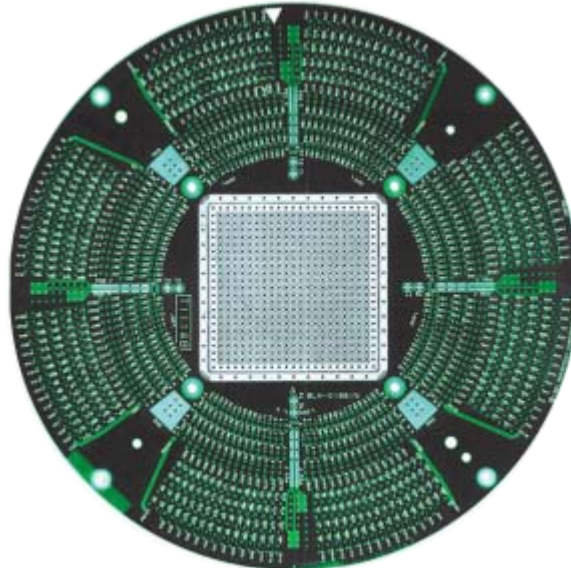


Product code	T102248
Diameter	Ø200 mm
Board thickness	4.8 mm
Type	512-channel T6671E-compatible (384-channel + MIXED)
Supported PB	T100662/T102176/T103106/T101761/T102440
Remarks	High-temperature version of the T11147 specifications. Probe card stiffener may be attached.

T6671E-Compatible (512-channel) Socket Board

T6672/T6673/T6682/T6683/T6573/T6563/T6553/T6565/T6535/T6577/T6567

T11148 ■ Socket Board

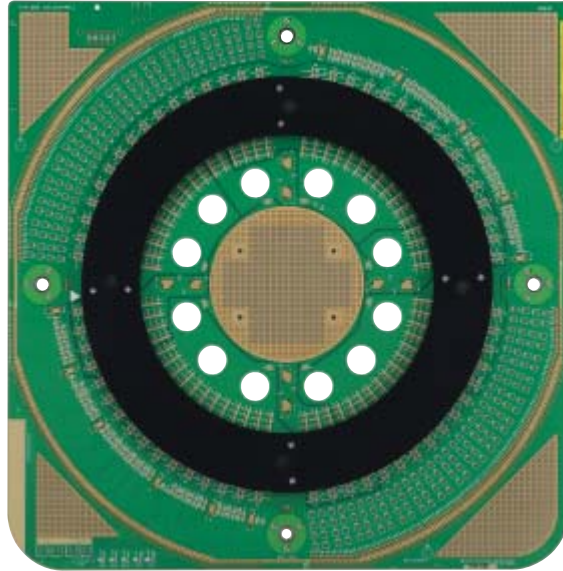


Product code	T11148
Diameter	Ø200 mm
Board thickness	2.2 mm
Type	512-channel T6671E-compatible (384-channel + MIXED)
Supported PB	T100662/T102176/T103106/T101761/T102440
Remarks	512-channel SB

AV/AV2 (512-channel) Performance Board for Manual Test

T6672/T6673/T6682/T6683/T6573/T6563/T6533/T6575/T6565/T6535/T6577/T6567

T101383 ■ Performance Board for Manual Test

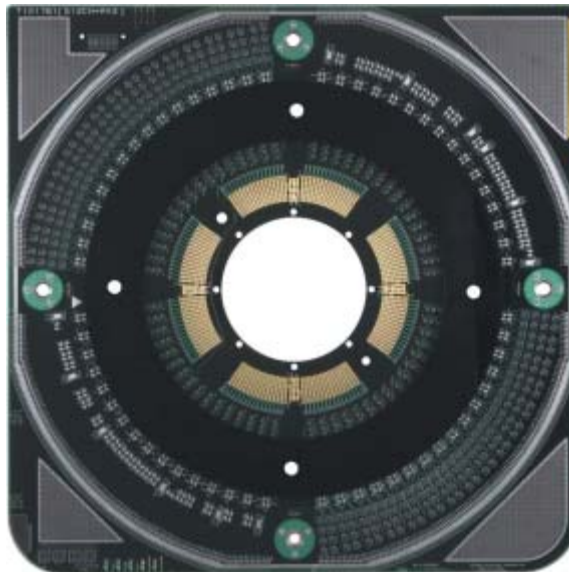


Product code	T101383
Diameter	480 x 480 mm
Board thickness	2.2 mm
Type	512-channel AV/AV2
Supported HIFIX	H7-1102/05/H3-0564/H3-94021/H7-110013
Remarks	MANUAL PB

AV/AV2 (512-channel) Performance Board for Prober

T6672/T6673/T6682/T6683/T6573/T6563/T6533/T6575/T6565/T6535/T6577/T6567

T101761 ■ Performance Board for Prober

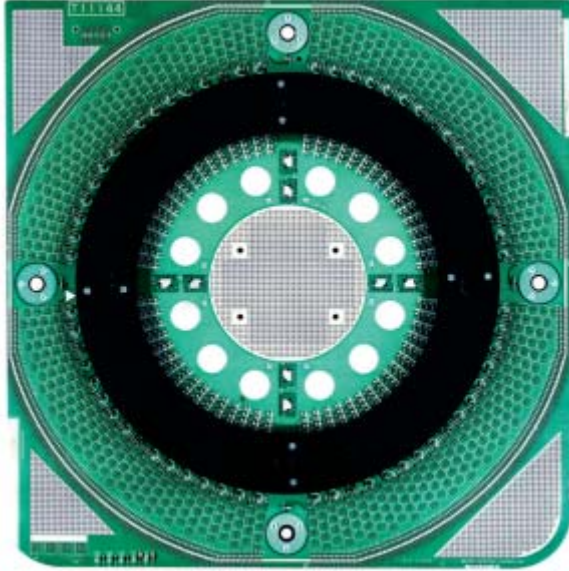


Product code	T101761
Diameter	480 x 480 mm
Board thickness	4.8 mm
Type	512-channel AV/AV2
Supported HIFIX	H7-1102/05/H3-0564/H3-94021/H7-110012/13
Remarks	WAFER PB

Performance Boards for AG/AE/BiCMOS/BiCMOS2/HV2 (512-channel) Head/Manual Test

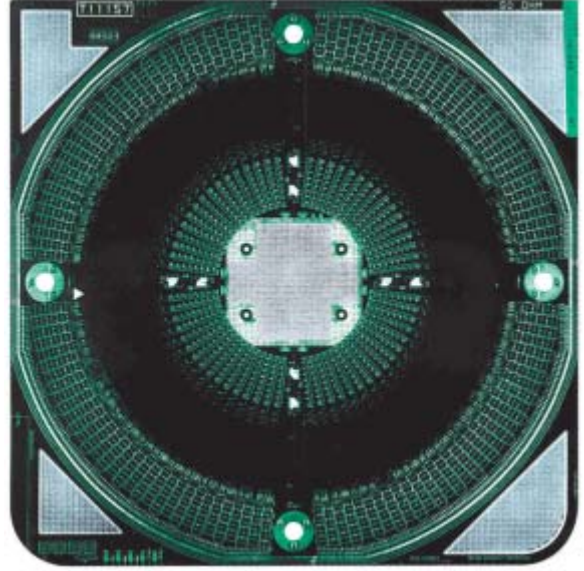
T6681/T6671B/T6671E/T3681/T3300 Series

T11144 ■ Performance Board for Manual Test



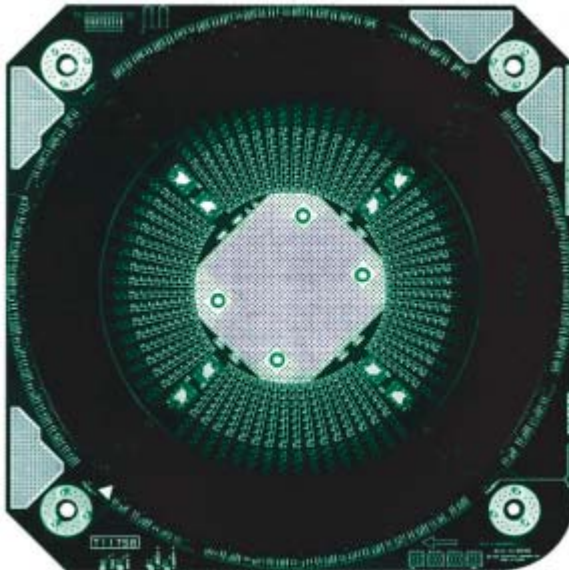
Product code	T11144
Size	480 x 480 mm
Board thickness	2.2 mm
Type	AG/AE/BiCMOS/BiCMOS2/HV2 (512-channel)
Remarks	Center has a land for mounting device with 2.54 mm pitch. Load relays can be added to all channels. Wiring to DUT connected directly to top of Au pad.

T11157 ■ Performance Board for Manual Test



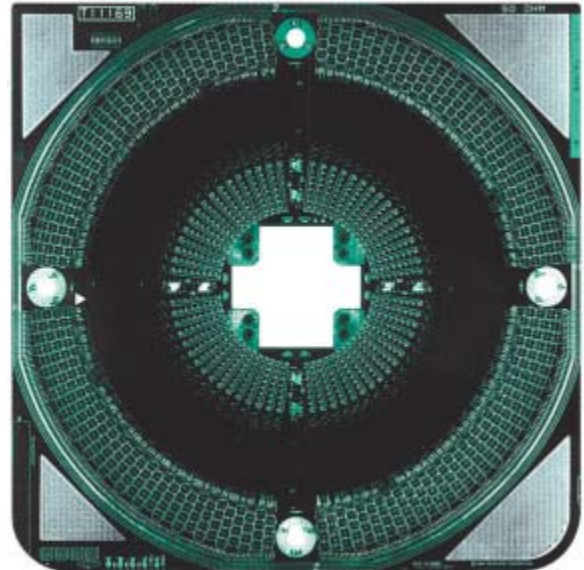
Product code	T11157
Size	480 x 480 mm
Board thickness	4.8 mm
Type	AG/AE/BiCMOS/BiCMOS2/HV2 (512-channel)
Remarks	Center has a land for mounting device with 2.54 mm pitch. Load relays can be added to all channels. Wiring to DUT wired directly to top of Au pad, making wiring easy.

T11758 ■ Performance Board for Manual Test



Product code	T11758
Size	380 x 380 mm
Board thickness	4.8 mm
Type	AG/AE/BiCMOS/BiCMOS2/HV2 (512-channel)
Remarks	Based on T11157: small/low-cost version, without load relay mount. For use with no or few load relays.)

T11169 ■ Performance Board for Manual Test

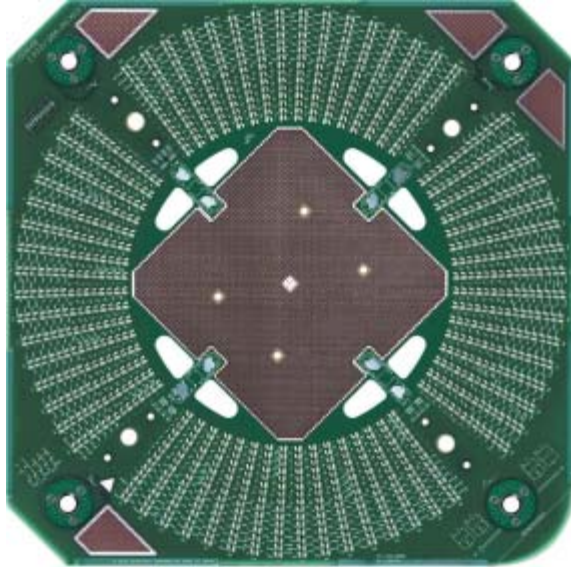


Product code	T11169
Size	480 x 480 mm
Board thickness	4.8 mm
Type	AG/AE/BiCMOS/BiCMOS2/HV2 (512-channel)
Remarks	T11157 with a hole in the middle. For custom socket boards. Build and use required socket board.

Performance Boards for AG/AE/BiCMOS/BiCMOS2/HV2 (512-channel) Head/Manual Test

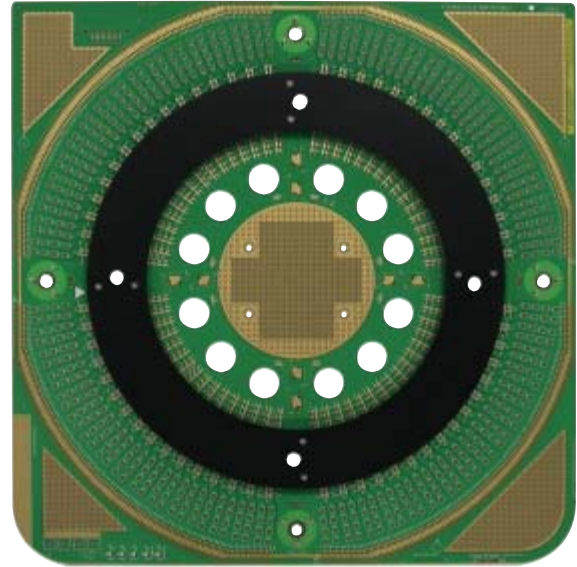
T6681/T6671B/T6671E/T3681/T3300 Series

T100648 ■ Performance Board for Manual Test



Product code	T100648
Size	380 x 380 mm
Board thickness	2.2 mm
Type	T6671E-compatible HIFIX
Remarks	Based on T100661: small/low-cost version, without load relay mount.

T100661 ■ Performance Board for Manual Test

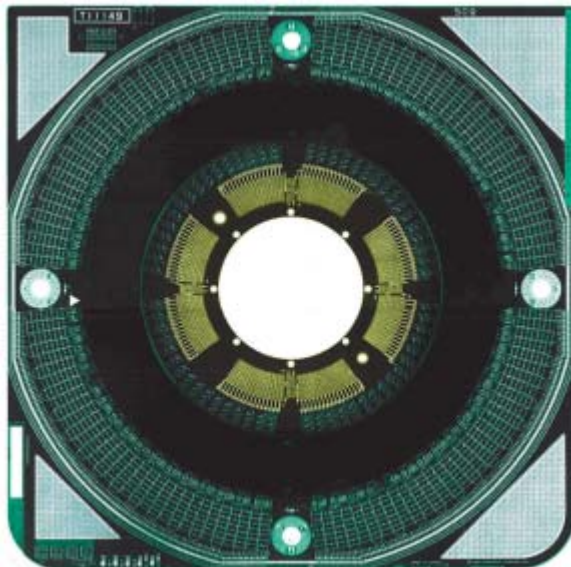


Product code	T100661
Size	480 x 480 mm
Board thickness	2.2 mm
Type	T6671E-compatible HIFIX
Remarks	Center has a land for mounting device with 2.54 mm pitch. Load relays can be added to all channels. Wiring to DUT connected directly to top of Au pad.

Performance Boards for AG/AE/BiCMOS/BiCMOS2/HV2 (512-channel) Head/Prober

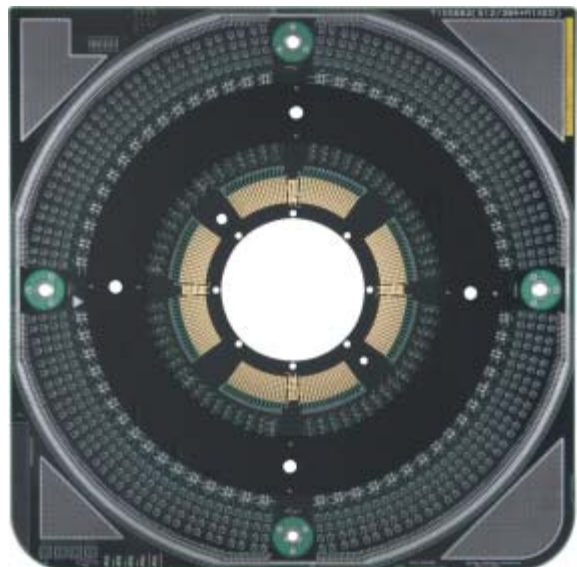
T6681/T6671B/T6671E/T3681/T3300 Series

T11149 ■ Performance Board for Prober



Product code	T11149
Size	480 x 480 mm
Board thickness	4.8 mm
Type	AG/AE/BiCMOS/BiCMOS2/HV2 (512-channel)
Remarks	When using a probe card, a frog ring (H7-9033) is required. When using a socket board, a frog ring (H3-90668 or H7-9039) is required.

T100662 ■ Performance Board for Prober

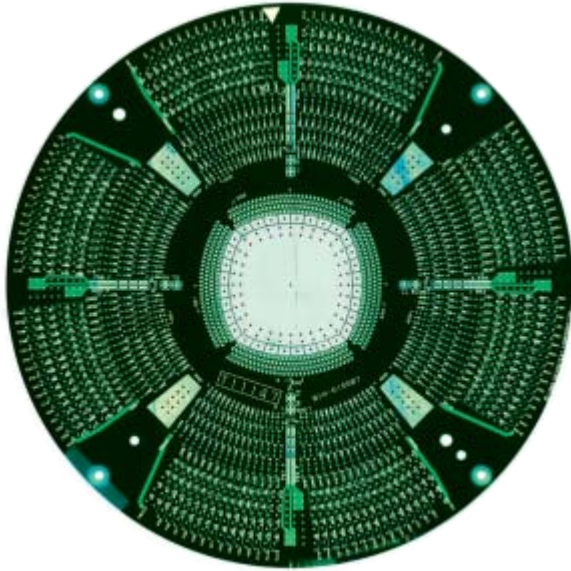


Product code	T100662
Size	480 x 480 mm
Board thickness	4.8 mm
Type	T6671E-compatible HIFIX
Remarks	When using a probe card, a frog ring (H7-9033) is required. When using a socket board, a frog ring (H3-90668 or H7-9039) is required.

Probe Cards for AG/AE/BiCMOS/BiCMOS2/HV2 (512-channel) Head

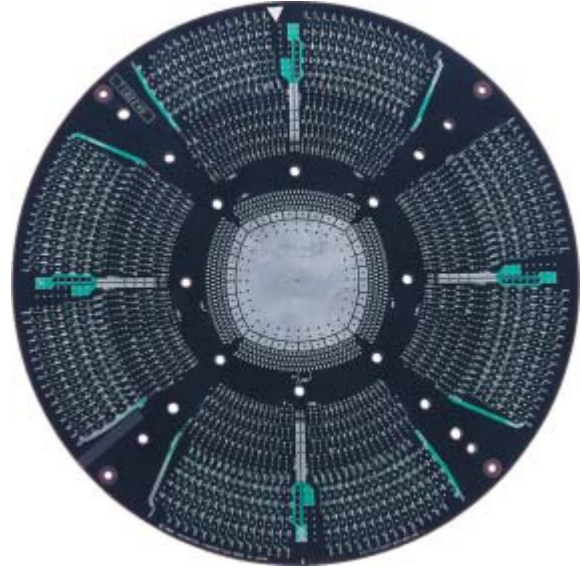
T6681/T6671B/T6671E/T3681/T3300 Series

T11147 ■ Probe Card Board



Product code	T11147
Diameter	Ø200 mm
Board thickness	4.8 mm
Type	AG/AE/BiCMOS/BiCMOS2/HV2 (512-channel)
Remarks	Use with performance board for prober (T11149) and frog ring (H3-90668 or H7-9039). For probe needle attachment, contact the probe card manufacturer.

T102248 ■ Probe Card Board

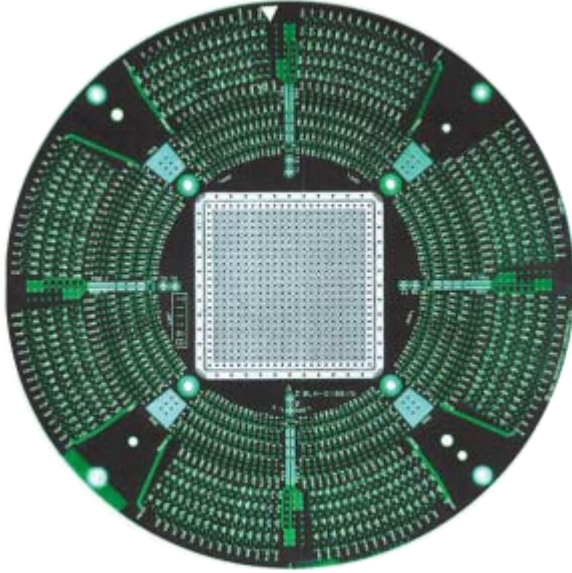


Product code	T102248
Diameter	Ø200 mm
Board thickness	4.8 mm
Type	AG/AE/BiCMOS/BiCMOS2/HV2 (512-channel)
Remarks	High-temperature version of the T11147 specifications. Probe card stiffener may be attached.

Socket Boards for AG/AE/BiCMOS/BiCMOS2/HV2 (512-channel) Head

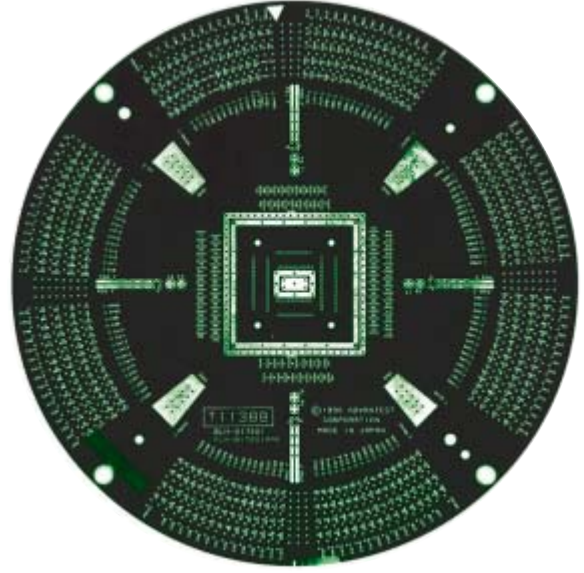
T6681/T6671B/T6671E/T3681/T3300 Series

T11148 ■ Socket Board



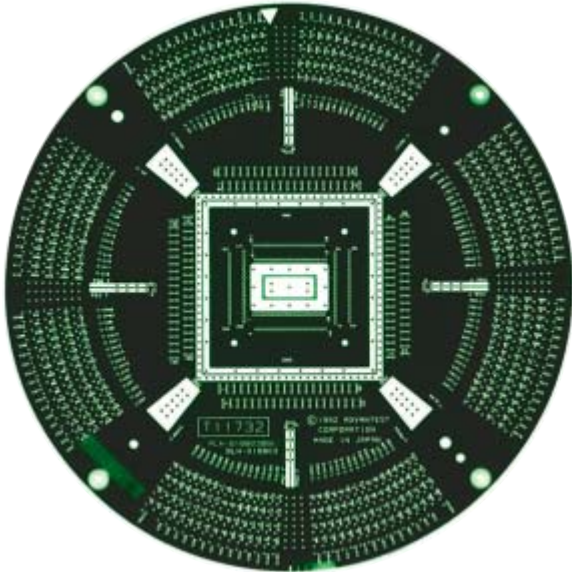
Product code	T11148
Diameter	Ø200 mm
Board thickness	2.2 mm
Type	AG/AE/BiCMOS/BiCMOS2/HV2 (512-channel)
Remarks	Use with performance board for prober (T11149) and frog ring (H3-90668 or H7-9039). Center has a land for mounting device with 2.54 mm pitch.

T11388 ■ Socket Board



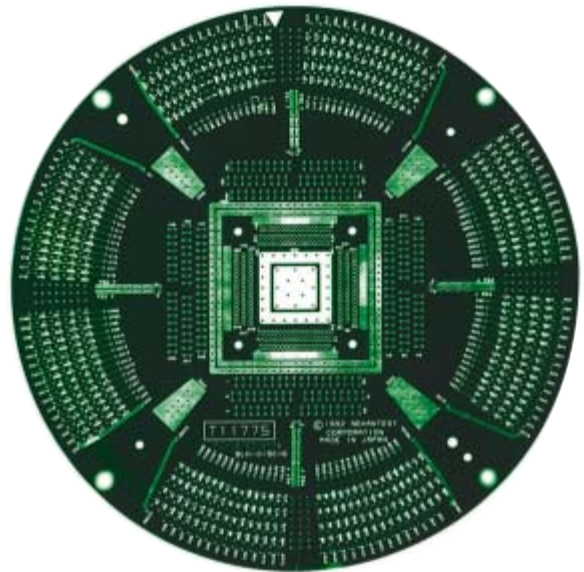
Product code	T11388
Diameter	Ø200 mm
Board thickness	2.2 mm
Type	AG/AE/BiCMOS/BiCMOS2/HV2 (512-channel)
Remarks	Use with performance board for prober (T11149) and frog ring (H3-90668 or H7-9039). Wired for QFP100 pin.

T11732 ■ Socket Board



Product code	T11732
Diameter	Ø200 mm
Board thickness	2.2 mm
Type	AG/AE/BiCMOS/BiCMOS2/HV2 (512-channel)
Remarks	Use with performance board for prober (T11149) and frog ring (H3-90668 or H7-9039). Wired for QFP 160 pin.

T11775 ■ Socket Board



Product code	T11775
Diameter	Ø200 mm
Board thickness	2.2 mm
Type	AG/AE/BiCMOS/BiCMOS2/HV2 (512-channel)
Remarks	Use with performance board for prober (T11149) and frog ring (H3-90668 or H7-9039). Wired for QFP 208 pin.

Performance Boards for LCD Driver Test System/Manual Test

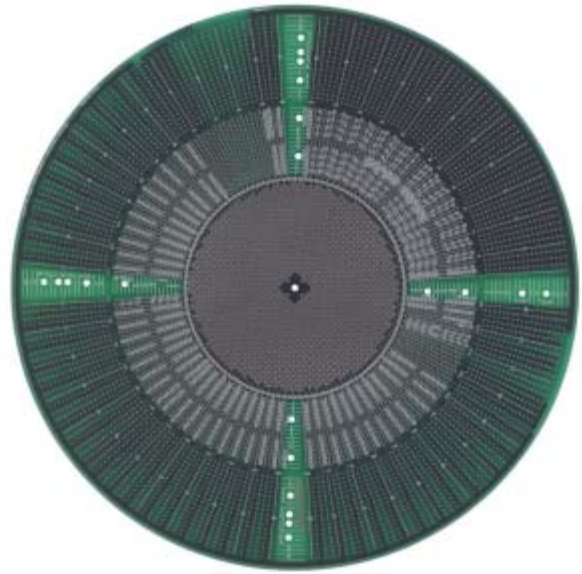
T6371/T6372/T6373/T6361/T6362/T6331

T101919 ■ Performance Board for Manual Test



Product code	T101919
Diameter	Ø300 mm
Board thickness	3.2 mm
Type	—
Supported HIFIX	H3-93870/H3-93870X02/X03/H7-110126
Remarks	MANUAL PB

T102985 ■ Performance Board for Manual Test

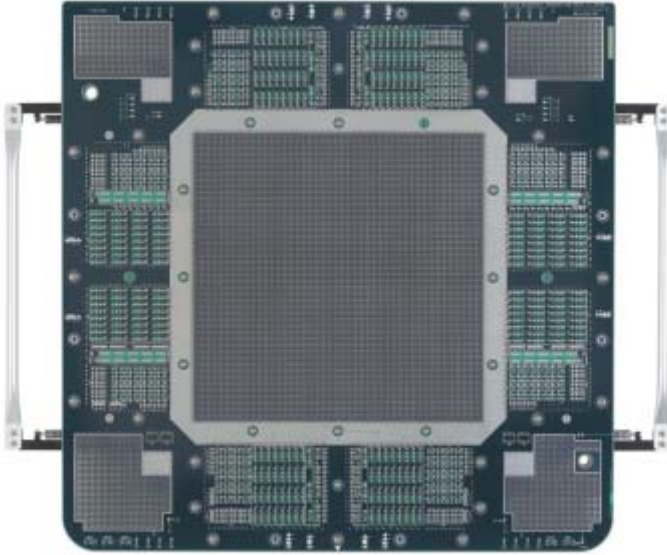


Product code	T102985
Diameter	Ø300 mm
Board thickness	3.72 mm
Type	—
Supported HIFIX	H7-110015/H7-110016/H7-110126/H7-110147/ H7-110147X02/H7-110150/H3-93870/H3-93870X02/X03
Remarks	MANUAL PB

Performance Boards for Mixed-signal Test System/Manual Test

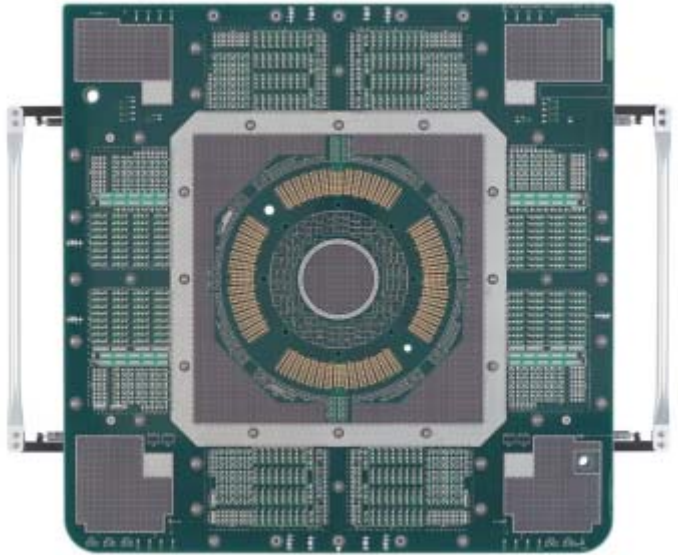
T7721/T7722

T102776 ■ Performance Board for Manual Test



Product code	T102776
Size	480 x 480 mm
Board thickness	2.2 mm
Type	256-channel SQUARE/128-channel SQUARE
Supported HIFIX	H7-110006/H7-110019
Remarks	MANUAL PB

T102817 ■ Performance Board for Prober



Product code	T102817
Size	480 x 480 mm
Board thickness	4.8 mm
Type	256-channel SQUARE
Supported HIFIX	H7-110006/H7-110019
Remarks	Supported probe card: T103232 Probing Assembly: H7-910202 64-channel only for Digital, 256-channel only for DC

T103253 ■ Performance Board for Prober



Product code	T103253
Size	480 x 480 mm
Board thickness	4.8 mm
Type	256-channel SQUARE DCT/128-channel SQUARE DCT
Supported HIFIX	H7-110006 (256-channel SQUARE DCT)/ H7-110019 (128-channel SQUARE DCT)
Remarks	Supported probe card: T103252 Probing Assembly: H7-910711 64-channel only for Digital, Digital/DC selection 256-channel

H7-910813 ■ DCT Debugging Kit

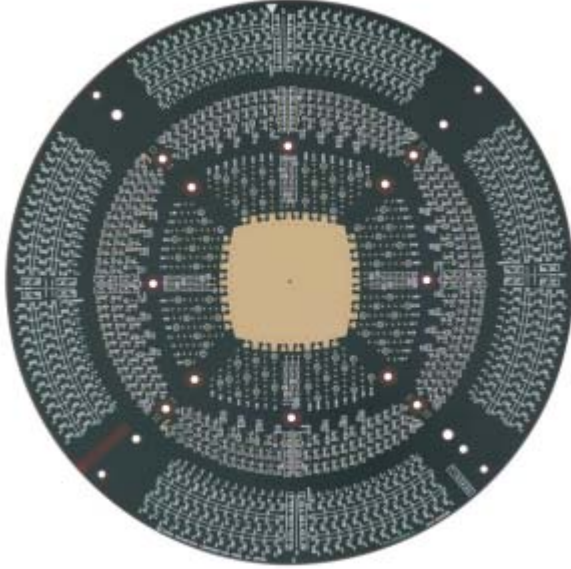


Product code	H7-910813
Size	Ø245.4 mm (Ø322 mm including the Lock Handle), Height 101.3 mm
Weight	5 kg
Supported Test System	T7721/T7722
Supported PC size	Ø200 mm
Remarks	Supported PB: T103253

Probe Cards for Mixed-signal Test System

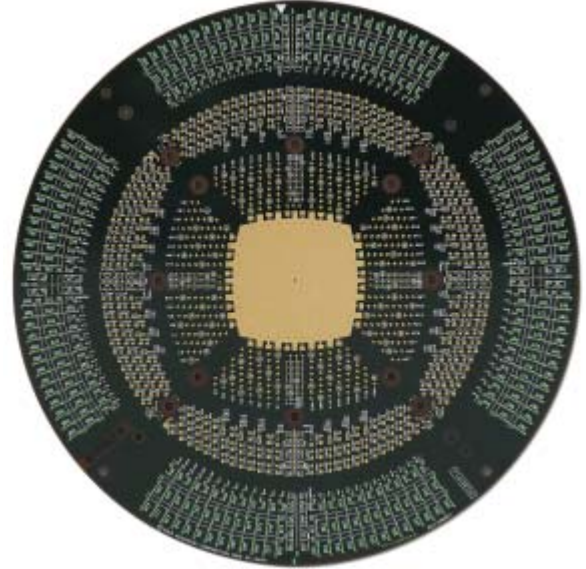
T7721/T7722

T103232 ■ Probe Card



Product code	T103232
Size	Ø200 mm
Board thickness	4.8 mm
Type	H7-110006 (256-channel SQUARE DCT)/ H7-110019 (128-channel SQUARE DCT)
Supported PB	T102817
Remarks	Probing Assembly: H7-910202

T103252 ■ Probe Card

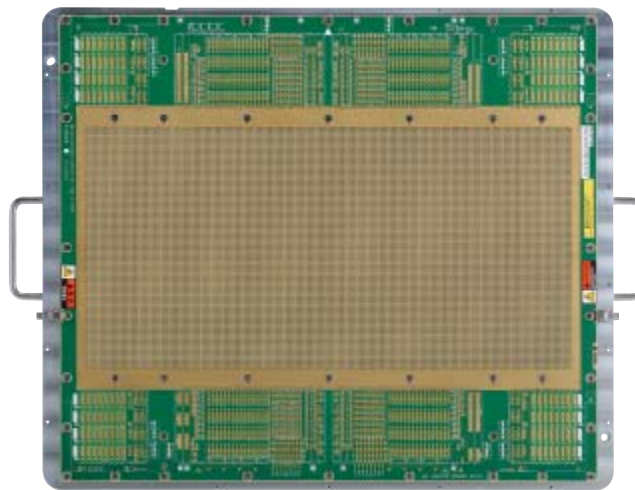


Product code	T103252
Size	Ø200 mm
Board thickness	4.8 mm
Type	H7-110006 (256-channel SQUARE DCT)/ H7-110019 (128-channel SQUARE DCT)
Supported PB	T103253
Remarks	Probing Assembly: H7-910711

Performance Board for Mixed-signal Test System/Manual Test

T7723

T103303 ■ Performance Board for Manual Test



Product code	T103303
Diameter	550 x 480 mm
Board thickness	2.8 mm
Type	256-channel SQUARE
Supported HIFIX	H7-110156
Remarks	MANUAL PB